



Ministry  
of Defence

# GENERATOR SET, DIESEL ENGINE DRIVEN, 2 kW, 230 V/110 V AC/28 V DC (Drumgrange Ltd)

## 6115-G-710-741 COMPLETE EQUIPMENT SCHEDULE SERVICE EDITION (SIMPLE EQUIPMENT)

Issue No. 002

Amendment No. 002

June 2018

Sponsored for use in the  
United Kingdom Ministry of Defence  
and Armed Forces by DES LE OSP - OI

### KN080

~~This information is released by the UK Government for Defence purposes only. This information must be afforded the same degree as afforded to information of an equivalent classification originated by the recipient Government or as required by the recipient Government's National Security regulations. This information may be disclosed only within the Defence Department of the recipient's Government and its Defence Contractors within its territory, except as otherwise authorised by the Ministry of Defence (DES LE OSP - OI). Such recipients shall be required to accept the information on the same conditions as the UK Government. This information may be subject to privately owned right.~~

Publications Authority: DES LE OSP - OI

Operational Infrastructure

Mail Point #1309

Spruce 3a

MOD Abbey Wood

BS34 8JH

Users should forward any comments on this publication using the form attached inside



---

**PAGE INTENTIONALLY LEFT BLANK**

**AMENDMENT RECORD**

<b>Amdt No.</b>	<b>Incorporated by (Signature)</b>	<b>Date</b>
1	INCORPORATED	Feb 15
2	INCORPORATED	Jun 18
3		
4		
5		
6		
7		
8		
9		
10		
11		
12		
13		
14		
15		
16		
17		
18		
19		
20		
21		
22		
23		
24		
25		
26		
27		
28		
29		
30		
31		

<b>Amdt No.</b>	<b>Incorporated by (Signature)</b>	<b>Date</b>
32		
33		
34		
35		
36		
37		
38		
39		
40		
41		
42		
43		
44		
45		
46		
47		
48		
49		
50		
51		
52		
53		
54		
55		
56		
57		
58		
59		
60		
61		
62		



---

**PAGE INTENTIONALLY LEFT BLANK**

**CONTENTS**

<b>PRELIMINARY MATERIAL</b>	<b>Page</b>
Front cover.....	(i)
AMENDMENT RECORD.....	(iii)
CONTENTS (this list).....	(v)
PREFACE.....	(vi)
Introduction.....	(vi)
Instructions for use by units.....	(vi)
Initial issues by Royal Logistics Corps.....	(vi)
In lieu items.....	(vi)
General notes.....	(vi)
Amendments.....	(vii)
Indentations.....	(vii)
Description.....	(vii)
Additional information.....	(vii)
Applicability details.....	(vii)
Related and associated publications.....	(viii)
Related publications.....	(viii)
Associated publications.....	(ix)
ABBREVIATIONS AND SYMBOLS.....	(ix)
Abbreviations.....	(ix)
Symbols.....	(x)
FORM 10.....	Final leaf

**COMPLETE EQUIPMENT SCHEDULE, SERVICE EDITION (SIMPLE EQUIPMENT)**

Chapter

- 1 General information - Not issued
- 2 Complete equipment schedule, Generator Set, Diesel Engine Driven, 2kW230V/110VAC, 28VDC, (Drumgrange Ltd)
  - 2-1 Generator Set
    - 2-1-1 Accessories
    - 2-1-2 Tools
    - 2-1-3 Spares - Not Issued
    - 2-1-4 Equipment literature
- 3 Indexes - Not issued



---

## PREFACE

Sponsor: Operational Infrastructure (OI)

Project No.:

File Ref: DG Log (Land) ESS 13/8/18

Publication Authority: OI

## INTRODUCTION

1 Service users should forward any comments on this publication using the procedures and templates provided on the Joint Asset Management and Engineering Solutions (JAMES) or Technical Documents On-Line (TDOL) portals. A Form 10 is also provided at the end of this publication; it may be copied and used for forwarding comments if JAMES or TDOL is not available.

2 AESPs are issued under UK MoD authority and where AESPs specify action is to be taken, the AESP will of itself be sufficient authority for such action and also for the demanding of the necessary stores, subject to the provisions of Para 3 below.

3 The subject matter of this publication may be affected by Defence Instructions and Notices (DIN), Standard Operating Procedures (SOP) or by local regulations. When any such Instruction, Order or Regulation contradicts any portion of this publication it is to be taken as the overriding authority.

### Instructions for use by units

4 Detailed instructions for use by units are given in Joint Service Publication (JSP) 336 Volume 12.

### Initial issues by Royal Logistics Corps

5 Initial issues by Royal Logistics Corps (RLC) are as described below:

5.1 One copy of the CES will be attached to the Unit's copy of the issue voucher and one further copy accompanying every equipment.

5.2 Deficiencies (if any) will be enfaced on the covering issue voucher by reference to the Serial Number of the items listed in the simple CES.

5.3 'To follow' vouchers will not be created.

5.4 All items listed in the CES can be issued separately. If any listed herein becomes unserviceable it should be extracted and exchanged and the equipment retained pending receipt. Transfers between equipment holders should normally be complete to CES.

### In lieu items

6 Authorized 'in lieu' items held against this CES will not be replaced until such time as they are no longer serviceable. When replacement becomes necessary the correct item, as listed in the CES, will be demanded.

### General notes

7 Certain items may be annotated as follows:

7.1 (E) - Expendable stores, consumable stores and material, 'NON LEDGER' spare parts of minor value.

- 7.2 (X) - ESSENTIAL ITEMS without which the RLC will not issue the equipment.
- 7.3 (\*) - This asterisk indicates the accountability classification of the item.
- 7.4 (NI) - (Not Illustrated) when appearing with a number in the 'Fig Item' column indicates that the item is not illustrated.
- 7.5 (NIV) - (Not In Vocabulary) indicates that the item is not available within the stores system.

**Amendments**

8 Amendments to the catalogue will be published as and when necessary. These will be numbered consecutively, and the Amendment record sheet is to be completed for each amendment list embodied. New or amended material will be highlighted by side lining to show the extent of the amendment.

**Indentations**

9 Items are listed in a logical assembly/disassembly order and are indented by the 'dot system' in which each 'Dot' depicts the relationship of the item to the assembly.

MAIN ASSEMBLY

Attaching parts for main assembly

- . FIRST LEVEL OF BREAKDOWN (Sub-assembly or detailed part of main assembly)
- . Attaching parts for the first level
- . . SECOND LEVEL OF BREAKDOWN (Sub-sub-assembly or detailed part of Sub-assembly)
- . . Attaching parts for second level
- . . . THIRD LEVEL OF BREAKDOWN (Sub-sub-sub-assembly or detailed part of Sub-sub-assembly)
- . . . Attaching parts for third level
- . . . . FOURTH LEVEL OF BREAKDOWN (Sub-sub-sub-sub-assembly or detailed part of Sub-sub-sub-assembly)
- . . . . Attaching parts for fourth level

**Description**

10 The Item Description and Annotation Block is also to convey additional information to the CES user, which will appear in brackets i.e. related location detail, e.g. another AESP or Chapter/Item within this AESP.

**ADDITIONAL INFORMATION**

**Applicability details**

11 This CES relates to the following equipment:

<u>NSN</u>	<u>Veh Code</u>	<u>Contract</u>
6115-99-908-6784	JR 8817 3500	BFI C1/59

## RELATED AND ASSOCIATED PUBLICATIONS

### Related publications

12 The Octad for the subject equipment consists of the publications shown below. All references are prefixed with the first eight digits of this publication. The availability of the publications can be checked on TDOL.

Category/Sub-category			Information Level			
			1 User/ Operator	2 Unit Maintenance	3 Field Maintenance	4 Base Maintenance
1	0	Purpose and Planning Information	101	*	*	*
	1	Equipment Support Policy Directive	111	*	*	*
2	0	Operating Information	201	*	*	*
	1	Aide-Mémoire	211	*	*	*
	2	Training Aids	*	*	*	*
3		Technical Description	201	302	*	*
4	1	Installation Instructions	*	*	*	*
	2	Preparation for Special Environments	*	*	*	*
5	1	Failure Diagnosis	201	522	*	*
	2	Maintenance Instructions	201	522	523	*
	3	Inspection Standards	*	522	*	*
	4	Calibration Procedures	*	*	*	*
6		Maintenance Schedule	601	*	*	*
7	1	Illustrated Parts Catalogue	711	*	*	*
	2	Commercial Parts List	*	*	*	*
	3	Complete Equipment Schedule, Production	741	*	*	*
	4	Complete Equipment Schedule, Service Edition (Simple Equipment)	*	*	*	*
	5	Complete Equipment Schedule, Service Edition (Complex Equipment)	*	*	*	*
8	1	Modification Instructions	*	812	*	*
	2	General Instructions, Special Technical Instructions and Servicing Instructions	*	*	*	*
	3	Service Engineered Modification Instructions (RAF only)	*	*	*	*

\* Category/sub-category not published



**Associated publications**

13 The following associated publications should be read in conjunction with this category:

<u>Reference</u>	<u>Title</u>
AESP 6150-A-100-201 SEI 14411	Earthing and Earthing Protection Safety Precautions for Electrical Equipment

**ABBREVIATIONS AND SYMBOLS**

**ABBREVIATIONS**

14 The following abbreviations are used in this category:

AC	Alternating Current
AESP	Army Equipment Support Publication
Amdt	Amendment
BFPO	British Forces Post Office
CES	Complete Equipment Schedule
Chap	Chapter
DC	Direct Current
DE&S	Defence Equipment and Support
DIN	Defence Instructions and Notices
DMC	Domestic Management Code
D of Q	Denomination of Quantity
EA	Each
e.g.	for example
EMER	Electrical and Mechanical Engineering Regulations
Eqpt	Equipment
Fig	Figure
FRACAS	Failure Reporting Analysis and Corrective Action System
JAMES	Joint Asset Management and Engineering Solutions
JSP	Joint Service Publication
kW	kilowatt
LE	Land Equipment
m	metre
MoD	Ministry of Defence
NATO	North Atlantic Treaty Organisation
No.	Number
NI	Not Illustrated
NIV	Not In Vocabulary
NSCM	NATO Supply Code for Manufacturers
NSN	NATO Stock Number
OI	Operational Infrastructure
OSP	Operational Support Programme
Para	Paragraph
PT	Project Team
RAF	Royal Air Force
Ref	Reference
RLC	Royal Logistic Corps
SEI	Service Engineering Instruction
SME	Subject Matter Expert
SOP	Standard Operating Procedures
TDOL	Technical Documents On-Line
Tel	Telephone
UK	United Kingdom
V	Volt



---

**SYMBOLS**

15 There are no symbols used in this category.

---

**CHAPTER 2-0**

**COMPLETE EQUIPMENT SCHEDULE (SERVICE)**

**SIMPLE EQUIPMENT**

**GENERATOR SET**

Chapter

2-1 Generator Set, Diesel Engine Driven, 2kW, 230/110V AC, 28V DC (Drumgrange Ltd)

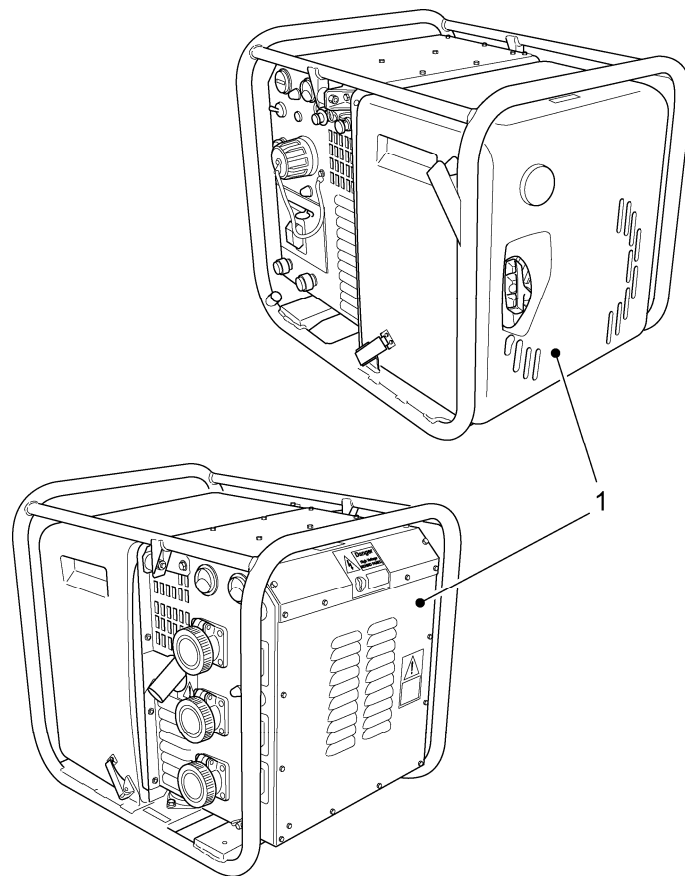


Fig 1 Generator Set, Diesel Engine Driven 2kW, 230V/110V AC 28V DC (Drumgrange Ltd)





**PAGE INTENTIONALLY LEFT BLANK**

---

**CHAPTER 2-1****COMPLETE EQUIPMENT SCHEDULE (SERVICE)****SIMPLE EQUIPMENT****GENERATOR SET**

## Chapter

- 2-1 Generator Set
- 2-1-1 Accessories
- 2-1-2 Tools
- 2-1-3 Spares - Not Issued
- 2-1-4 Equipment literature



**PAGE INTENTIONALLY LEFT BLANK - NO ILLUSTRATION**



**CES**

Fig No. Item No.	DMC NSCM	Army NSN Part Number	Item Description and Annotations	No. Off D of Q	Quantity on Issue
1				REF	
NI 0		NIV	SUMMARY OF ITEMS FORMING COMPLETE EQUIPMENT SCHEDULE	EA	
NI 1		NIV	. ACCESSORIES (Refer to Chap 2-1-1)	1 EA	
NI 2		NIV	. TOOLS (Refer to Chap 2-1-2)	1 EA	
NI 3		NIV	. SPARES - Not Issued (Refer to Chap 2-1-3)	1 EA	
NI 4		NIV	. EQUIPMENT LITERATURE (Refer to Chap 2-1-4)	1 EA	



**PAGE INTENTIONALLY LEFT BLANK**



---

**CHAPTER 2-1-1**

**COMPLETE EQUIPMENT SCHEDULE (SERVICE)**

**SIMPLE EQUIPMENT**

**ACCESSORIES**

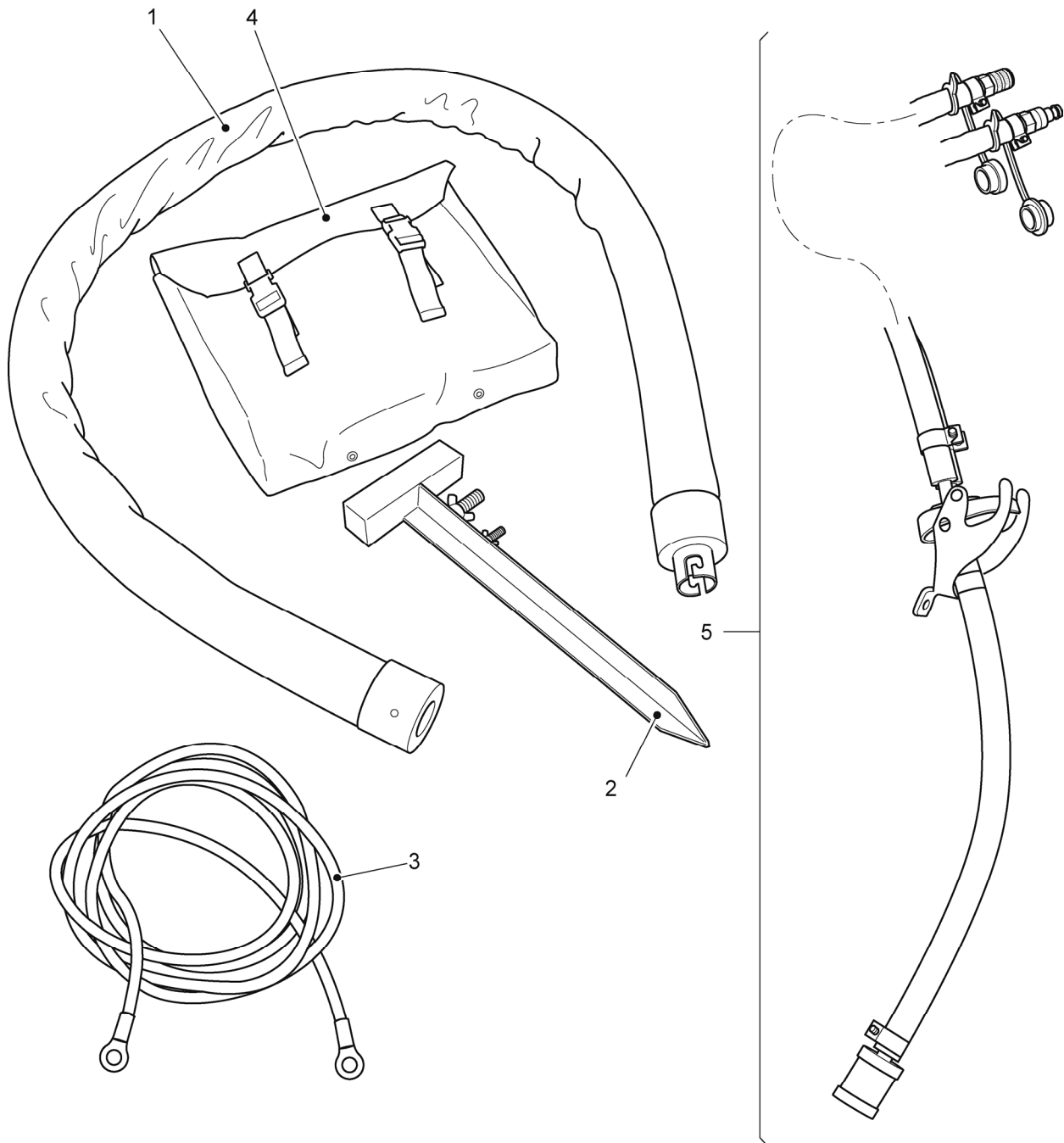


Fig 1 Accessories

**CES**

Fig No. Item No.	DMC NSCM	Army NSN Part Number	Item Description and Annotations	No. Off D of Q	Quantity on Issue
1				REF	
0	LFG2kW	6115-99-733-9114	. ACCESSORIES SET	EA	
1	LFG2kW	4720-99-611-7784 180-815	.. EXHAUST EXTENSION	1 EA	
2	LFG2kW	5975-99-901-0148 040-749/27	.. EARTH SPIKE	1 EA	
3	LFG2kW	6150-99-811-2625 SF29001	.. CABLE ASSY, ELECTRICAL (1.5 m) (X*)	1 EA	
4	LFG2kW	5140-99-939-0976 061-069	.. BAG ACCESSORIES	1 EA	
5	LFG2kW	4730-99-151-3452	.. MANIFOLD FUELLING, JERRYCAN ADAPTER ASSEMBLY (X*)	1 EA	



**PAGE INTENTIONALLY LEFT BLANK**



---

**CHAPTER 2-1-2**

**COMPLETE EQUIPMENT SCHEDULE (SERVICE)**

**SIMPLE EQUIPMENT**

**TOOLS**



**PAGE INTENTIONALLY LEFT BLANK - NO ILLUSTRATION**





CES

Fig No. Item No.	DMC NSCM	Army NSN Part Number	Item Description and Annotations	No. Off D of Q	Quantity on Issue
1				REF	
NI 0		NIV	. TOOLS	EA	
NI 1	LFG2kW	5210-99-796-7540	.. FEELER GAUGE (X)	1 EA	



---

**PAGE INTENTIONALLY LEFT BLANK**

---

**CHAPTER 2-1-3**

**COMPLETE EQUIPMENT SCHEDULE (SERVICE)**

**SIMPLE EQUIPMENT**

**SPARES - NOT ISSUED**



---

**PAGE INTENTIONALLY LEFT BLANK**



---

**CHAPTER 2-1-4**

**COMPLETE EQUIPMENT SCHEDULE (SERVICE)**

**SIMPLE EQUIPMENT**

**EQUIPMENT LITERATURE**



**PAGE INTENTIONALLY LEFT BLANK - NO ILLUSTRATION**



**CES**

<b>Fig No. Item No.</b>	<b>DMC NSCM</b>	<b>Army NSN Part Number</b>	<b>Item Description and Annotations</b>	<b>No. Off D of Q</b>	<b>Quantity on Issue</b>
1					
NI 0		NIV	EQUIPMENT LITERATURE	REF EA	
NI 1		AB408	. RECORD OF UNIT INSPECTIONS OF PLANT (X)	1 EA	Record on JAMES
NI 2		AB446	. EQUIPMENT RECORD BOOK (X)	1 EA	Record on JAMES
NI 3		4610-B-106-211	. ARMY EQUIPMENT SUPPORT PUBLICATION (AESP), SPECIAL-TO-ARMS AIDES MEMOIRE (X)	1 EA	Available on TDOL



---

**PAGE INTENTIONALLY LEFT BLANK**



**ARMY EQUIPMENT AND SUPPORT PUBLICATION (AESP) AND ELECTRICAL AND MECHANICAL ENGINEERING REGULATIONS (EMER) - FORM 10**

<b>*AESP/EMER NUMBER:</b>		<b>*IS THIS SAFETY RELATED?</b>	Yes	<input type="checkbox"/>	No	<input type="checkbox"/>
---------------------------	--	---------------------------------	-----	--------------------------	----	--------------------------

<b>Send Form 10 via the Email or Post address. However email is preferred.</b>		Tel	
<b>Email:</b>		<b>Post to</b>	<b>Form 10 Cell FRACAS BFPO 794</b>
(To email this form send as a copy to the email address above)			

ORIGINATORS DETAILS			
<b>*Address</b>			<b>*Name</b>
			<b>Rank / Grade</b>
			<b>*Phone</b>
			<b>*Senders Reference</b>
			<b>*Date Raised</b>
<b>* E-Mail</b>		<b>Eqpt Asset Code (if applicable)</b>	

AESP/EMER DETAILS							
<b>*Full Title of AESP/EMER (Not the AESP/EMER Number)</b>							
<b>*Edition</b>	<b>*Amendment</b>	<b>*Chapter</b>	<b>*Page</b>	<b>*Paragraph</b>	<b>Figure</b>	<b>Instruction</b>	<b>Other</b>
<b>*Comments: If additional information is to be supplied, please e-mail with the Form 10 as separate attachments.</b>							

FORM 10 CELL USE			
<b>*Date Received</b>		<b>*Form 10 Reference</b>	
<b>*Date Sent to PT / SME</b>		<b>Problem Report</b>	

PROJECT TEAM / SME RESPONSE TO COMMENTS:			
<b>Project Team (PT) / SME</b>		<b>*Sponsors Name</b>	
<b>*Phone</b>		<b>Rank / Grade</b>	
<b>*Email</b>		<b>*Date Received</b>	
<b>*The following action is to be carried out:</b>	<b>Mark:</b>		<b>Mark:</b>
Issue a revised/amended AESP/EMER:		Under investigation:	
Incorporate comment(s) in future amendments:		No action required:	
<b>Remarks:</b>			
<b>SPONSOR/PT FINAL CLOSURE STEPS</b>	<b>Mark:</b>	<b>Form 10 Cell notified of Date action taken</b>	<b>Date:</b>
Form 10 Originator notified of the action taken:			



**ARMY EQUIPMENT AND SUPPORT PUBLICATION (AESP) AND ELECTRICAL AND  
MECHANICAL ENGINEERING REGULATIONS (EMER) - FORM 10**

Form 10 Guidance

Form 10 can be found within the AESP or, as a template, from the JAMES Portal (Hot Topic – Forms) & TDOL (FORM10).

**Originator responsibility** is to enter the following details marked \*:

- In the **AESP/EMER Number**: cell enter the full document number e.g. AESP 1256-I-400-711.
- Is this **Safety Related?** – select Yes or No as appropriate.
- Originator Details:
  - Full address Inc Post Code or BFPO NO.
  - Originator email address
  - Senders Reference – that must be unique.
- AESP Details shall enter the following details:
  - The Full Title of AESP/EMER should not include the AESP/EMER Number
  - Enter details in all other mandatory fields marked \*.
  - Additional information relating to the Comments (AESP copies, additional text details or photographs) should be attached to the Email at the same time.
- Originator makes up the Form 10 & Sends to Form 10 cell via
  - Post to **Form 10 Cell, FRACAS, BFPO 794** address.
  - Email to [REDACTED]
  - **Any AESP that holds a Security marking higher than 'Restricted' should be securely circulated.**

**FORM 10 CELL responsibilities:**

The Form 10 Cell enters:

- Date Received
- Form 10 Reference
- Date sent to Sponsor
- Register all Form 10 details in the MOSS Form 10 Tracker.

**Sponsor Responsibility**

The Sponsor will:

- Enter their name, email address & phone contact details.
- Enter Date Received
- Enter Details in the non-mandatory field as & when required.
- Acknowledge receipt of Form 10, within 5 working days, by email to Form 10 Cell.
- Assess the contents of comments and details received.
- Mark the relevant Action box and fill out the Remarks field.
- Enter date when the Form 10 is returned to Form 10 Cell.
- Email copy of completed Form 10, within 6 weeks, to the Form 10 Cell and Originator.

**Form 10 Cell on receipt will:**

- Record final stage of the Form 10 into the MOSS Form 10 Tracker.
- Close off the Form 10 and archive.

AESP Form 10 (Issue 6.2 dated July 13)

\* Mandatory Fields for Originator

\* Mandatory Fields for Sponsor.