



Ministry  
of Defence

# GENERATOR SET, DIESEL ENGINE DRIVEN, 2 kW, 230 V/110 V AC/28 V DC (Drumgrange Ltd)

## 6115-G-710-711 ILLUSTRATED PARTS CATALOGUE

Issue No. 003

Amendment No. 004

June 2018

Sponsored for use in the  
United Kingdom Ministry of Defence  
and Armed Forces by DES LE OSP - OI

### KN080

~~This information is released by the UK Government for Defence purposes only. This information must be afforded the same degree as afforded to information of an equivalent classification originated by the recipient Government or as required by the recipient Government's National Security regulations. This information may be disclosed only within the Defence Department of the recipient's Government and its Defence Contractors within its territory, except as otherwise authorised by the Ministry of Defence (DES LE OSP - OI). Such recipients shall be required to accept the information on the same conditions as the UK Government. This information may be subject to privately owned rights.~~

Publications Authority: DES LE OSP - OI

Operational Infrastructure

Mail Point #1309

Spruce 3a

MOD Abbey Wood

BS34 8JH

Users should forward any comments on this publication using the form attached inside



---

**PAGE INTENTIONALLY LEFT BLANK**

**AMENDMENT RECORD**

<b>Amdt No.</b>	<b>Incorporated by (Signature)</b>	<b>Date</b>
1	INCORPORATED	Oct 14
2	INCORPORATED	Feb 15
3	INCORPORATED	Mar 17
4	INCORPORATED	Jun 18
5		
6		
7		
8		
9		
10		
11		
12		
13		
14		
15		
16		
17		
18		
19		
20		
21		
22		
23		
24		
25		
26		
27		
28		
29		
30		
31		

<b>Amdt No.</b>	<b>Incorporated by (Signature)</b>	<b>Date</b>
32		
33		
34		
35		
36		
37		
38		
39		
40		
41		
42		
43		
44		
45		
46		
47		
48		
49		
50		
51		
52		
53		
54		
55		
56		
57		
58		
59		
60		
61		
62		



**PAGE INTENTIONALLY LEFT BLANK**

**CONTENTS**

<b>PRELIMINARY MATERIAL</b>	<b>Page</b>
Front cover.....	(i)
AMENDMENT RECORD.....	(iii)
CONTENTS (this list).....	(v)
PREFACE.....	(vi)
Introduction.....	(vi)
Quantity.....	(vi)
Demands.....	(vi)
Modification state.....	(vii)
Annotations.....	(vii)
Abbreviations.....	(vii)
Amendments.....	(vii)
Indentations.....	(vii)
Description.....	(viii)
Source, maintenance, recoverability.....	(viii)
Interchangeability.....	(ix)
Usable on Code Equipment.....	(ix)
Usable on Code Assembly.....	(ix)
Related and associated publications.....	(ix)
Related publications.....	(ix)
Associated publications.....	(xi)
ABBREVIATIONS AND SYMBOLS.....	(xi)
Abbreviations.....	(xi)
Symbols.....	(xii)
FORM 10.....	Final leaf

**ILLUSTRATED PARTS CATALOGUE**

Chapter

- 1 General information
- 2 Parts list
- 3 Indexes



---

## PREFACE

Sponsor: Operational Infrastructure (OI)

Project No.:

File Ref: DG Log (Land) ESS 13/8/18

Publication Authority: OI

## INTRODUCTION

1 Service users should forward any comments on this publication using the procedures and templates provided on the Joint Asset Management and Engineering Solutions (JAMES) or Technical Documents On-Line (TDOL) portals. A Form 10 is also provided at the end of this publication; it may be copied and used for forwarding comments if JAMES or TDOL is not available.

2 AESPs are issued under UK MOD authority and where AESPs specify action is to be taken, the AESP will of itself be sufficient authority for such action and also for the demanding of the necessary stores, subject to the provisions of Para 3 below.

3 The subject matter of this publication may be affected by Defence Instructions and Notices (DIN), Standard Operating Procedures (SOP) or by local regulations. When any such Instruction, Order or Regulation contradicts any portion of this publication it is to be taken as the overriding authority.

4 This Illustrated Parts Catalogue (IPC) is designed as an aid to the identification of components, parts or assemblies of parts of the equipment and to provide information necessary for demanding spares.

5 This IPC may list some or all of the parts comprising the equipment concerned, but only those parts assigned a NATO Stock Number, Service Catalogue or Reference Number will normally be available as spares. Should there be a requirement for an item not assigned a number, demands may be submitted quoting AESP, Item Number, Figure reference and Item Name. Where a manufacturer's reference is known, this should also be quoted.

### Quantity

6 The figure in the 'Number Off' column specifies the quantity for the unit (or assembly, sub-assembly etc); it does not indicate the quantity to be demanded.

### Demands

7 When demanding Spare Parts the following particulars must be quoted:

7.1 Management Code (Man Code).

7.2 NATO Stock Number.

7.3 Item Name.

7.4 Name of equipment for which the part is required.

7.5 Manufacturer's reference, if known.

### NOTE

Alternatives quoted apply only to the equipment covered by this IPC.

---

**Modification state**

8 When appropriate, a list at the front of each chapter or sub-chapter will indicate the modification numbers which have been incorporated in the IPC by amendment action, subsequent to initial issue.

**Annotations**

9 The following notations are used in this publication:

9.1 A/R When appearing in the 'Number Off' column indicates that the quantity is 'as required'.

9.2 NI (Not Illustrated) when appearing with a number in the 'Fig Item' column indicates that the item is not illustrated.

9.3 NP (Non Provisioned) when appearing in the 'NATO Stock Number' column indicates that the item may be illustrated, but not available from stock as a replacement item.

9.4 REF In the 'Number Off' column indicates that the item is listed for reference purposes only.

**Abbreviations**

10 Abbreviations and symbols used in the IPC have been approved and are listed separately.

**Amendments**

11 Amendments to the catalogue will be published as and when necessary. They will be numbered consecutively, and the amendment record sheet is to be completed for each amendment list embodied.

12 New or amended material will be highlighted by side lining to show the extent of the amendment.

**Indentations**

13 Items are listed in a logical assembly/disassembly order and are indented by the 'dot system' in which each 'dot' depicts the relationship of the item to the main assembly:

**MAIN ASSEMBLY**

Attaching parts for main assembly

. FIRST LEVEL OF BREAKDOWN (Sub-assembly or detailed part of main assembly)

. Attaching parts for the first level

. . SECOND LEVEL OF BREAKDOWN (Sub-sub-assembly or detailed part of Sub-assembly)

. . Attaching parts for second level

. . . THIRD LEVEL OF BREAKDOWN (Sub-sub-sub-assembly or detailed part of Sub-sub-assembly)

. . . Attaching parts for third level

. . . . FOURTH LEVEL OF BREAKDOWN (Sub-sub-sub-assembly or detailed part of Sub-sub-assembly)

. . . . Attaching parts for fourth level



## NOTES

- (1) Attaching parts for the Main Assembly are listed at the end of the text of the Main Assembly.
- (2) NATO Stock Numbers (NSNs) quoted in this IPC will supersede any number that may have been allotted previously.

**Description**

14 The item Description and Annotation Block is also to convey additional information to the IPC user, such as:

- 14.1 Related location details, i.e. another AESP or Chapter/Item within the AESP.
- 14.2 Circuit reference numbers relating to the illustration.

**Source, maintenance, recoverability**

15 The Source, Maintenance, Recoverability (SMR) codes indicates the manner of acquiring items for maintenance, repair or overhaul of end items, maintenance levels authorised to perform required maintenance functions and disposition action to be taken on unserviceable items. The following SMR codes with their detail could be used (Table 1):

**TABLE 1 SOURCE, MAINTENANCE, RECOVERABILITY CODES**

SOURCE		MAINTENANCE		RECOVERABILITY	Reserved for User					
		USE	REPAIR							
1st Position	2nd Position	3rd Position		4th Position	5th Position	6th Position				
P	Procurable	A	O	Remove/ replace at Organizational Level	Z	No repair	Z	Non-repairable Condemn at 3rd Position Level		
		B							E	Support Equipment Stocked
		C								
		D	Support Equipment Non-stocked							
		E		Life of System Support						
		F	Intermediate Kit							
G	Depot Kit									
K		Component Of a Repair Kit	B	In both kits	F	Repair at Intermediate	F	Repair at Organizational (or Field or Depot)		
M	Manufacture		O	Organizational					D	Limited Repair at O or F Level
A		Assemble	F	Intermediate	D	Remove/ replace at Depot Level	D	Overhaul at Depot		
	D		Depot							
	X		Non- procured	A					Requisition NHA	L
B	Reclamation or Requisition by Part Number									
C	Mfg Drawings									



**Interchangeability**

16 The Interchangeability (ICY) indicates the interchangeability of two or more items at the same location either for the same configuration or, when a Part Number change is involved, across two different Configuration Standards. The column contains two characters: the first character is used to indicate the item's ICY with the succeeding item listed, eg -9, 9- and 99. The following ICY codes with their detail could be used (Table 2):

**TABLE 2 ICY CODES**

CODE	DETAIL
0	Item not interchangeable
1	Obsolescent item - Fully interchangeable
2	Replacement item - Fully interchangeable
3	Pre-modified item not to be used to replace another item at a different Configuration Standard
4	Fully interchangeable with but not identical to other ICY '4' items. It is only used when items are presented at the same Configuration Standard
5	Item interchangeable with the ICY '3' item above
6	Qualified interchangeability, see related location detail in Item Description column
9	Fully interchangeable item with same NSN but different part number

**Usable on Code Equipment**

17 The Usable on Code Equipment (UCE) identifies Equipment Variants and Configurations (V/C) and provides the means of relating the applicability of breakdown parts to their respective equipments. It is represented by an alpha character 'A' to 'H' with remaining characters space filled. It is not shown if there is only one build standard. Breakdown parts are represented by the alpha code of their appropriate equipment V/C and the remaining spaces in the column are filled with hyphens '-'.

**Usable on Code Assembly**

18 The Usable on Code Assembly (UCA) identifies Equipment V/C and provides the means of relating the applicability of breakdown parts to their respective assemblies. It is represented by an alpha character 'A' to 'F' with remaining characters space filled and where printed will be prefixed by a double asterisk (\*\*). Breakdown parts are represented by the alpha code of their appropriate equipment V/C and the remaining spaces in the column are filled with hyphens '-'.

**RELATED AND ASSOCIATED PUBLICATIONS**

**Related publications**

19 The Octad for the subject equipment consists of the publications shown below. All references are prefixed with the first eight digits of this publication. The availability of the publications can be checked on TDOL.

Category/Sub-category			Information Level			
			1 User/ Operator	2 Unit Maintenance	3 Field Maintenance	4 Base Maintenance
1	0	Purpose and Planning Information	101	*	*	*
	1	Equipment Support Policy Directive	111	*	*	*
2	0	Operating Information	201	*	*	*
	1	Aide-Mémoire	211	*	*	*
	2	Training Aids	*	*	*	*
3		Technical Description	201	302	*	*
4	1	Installation Instructions	*	*	*	*
	2	Preparation for Special Environments	*	*	*	*
5	1	Failure Diagnosis	201	522	*	*
	2	Maintenance Instructions	201	522	523	*
	3	Inspection Standards	*	522	*	*
	4	Calibration Procedures	*	*	*	*
6		Maintenance Schedule	601	*	*	*
7	1	Illustrated Parts Catalogue	711	*	*	*
	2	Commercial Parts List	*	*	*	*
	3	Complete Equipment Schedule, Production	*	*	*	*
	4	Complete Equipment Schedule, Service Edition (Simple Equipment)	741	*	*	*
	5	Complete Equipment Schedule, Service Edition (Complex Equipment)	*	*	*	*
8	1	Modification Instructions	*	812	*	*
	2	General Instructions, Special Technical Instructions and Servicing Instructions	*	*	*	*
	3	Service Engineered Modification Instructions (RAF only)	*	*	*	*

\* Category/sub-category not published

## Associated publications

20 The following associated publications should be read in conjunction with this category:

<u>Reference</u>	<u>Title</u>
AESP 6150-A-100-201 SEI 14411	Earthing and Earthing Protection Safety Precautions for Electrical Equipment

## ABBREVIATIONS AND SYMBOLS

### ABBREVIATIONS

21 The following abbreviations are used in this category:

A	Ampere
AC	Alternating Current
AESP	Army Equipment Support Publication
Amdt	Amendment
AP	Air Publication
A/R	As Required
assy	Assembly
AVM	Anti-Vibration Mounting
BFPO	British Forces Post Office
Chap	Chapter
contd	Continued
dc	Direct Current
DE&S	Defence Equipment and Support
dim	dimension(s)
DMC	Domestic Management Code
e.g.	for example
EMER	Electrical and Mechanical Engineering Regulations
Eqpt	Equipment
Fig	Figure
FRACAS	Failure Reporting Analysis and Corrective Action System
ICY	Interchangeability
ID	Inside Diameter
in.	Inch(es)
IPC	Illustrated Parts Catalogue
JAMES	Joint Asset Management and Engineering Solutions
kW	kiloWatt
LE	Land Equipment
LED	Light Emitting Diode
LFG	Lightweight Field Generator
lg	Length (long)
LH	Left Hand
m	metre
MCB	Miniature Circuit Breaker
mm	millimetre(s)
MoD	Ministry Of Defence
MR	Metre(s)
NATO	North Atlantic Treaty Organisation
NI	Not Illustrated
No.	Number
NP	Not-Provisioned
NSCM	NATO Supply Code for Manufacturers
NSN	NATO Stock Number
OI	Operational Infrastructure

---

OSP	Operational Support Programme
PT	Project Team
RAF	Royal Air Force
Ref	Reference
RH	Right Hand
SEI	Service Engineering Instruction
SME	Subject Matter Expert
SMR	Source, Maintenance, Recoverability
TDOL	Technical Documents On-Line
Tel	Telephone
UCE	Usable on Code Equipment
UK	United Kingdom
V	Volt
V/C	Variants and Configurations
w	width
UCA	Usable on Code Assembly
UCE	Usable on Code Equipment
UK	United Kingdom
V	Volt
V/C	Variants and Configurations
V-TEG	Variable Tactical Electrical Generator

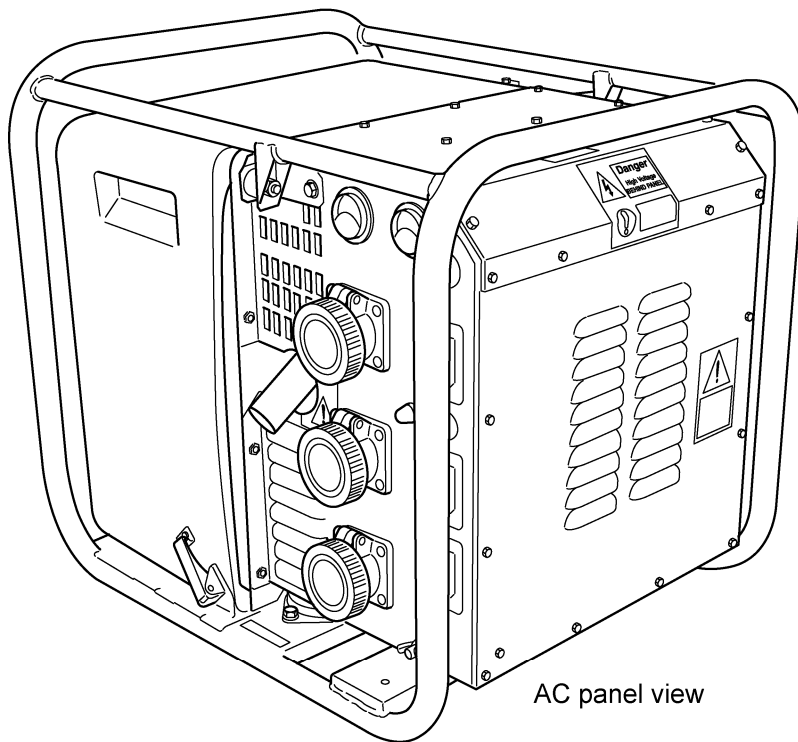
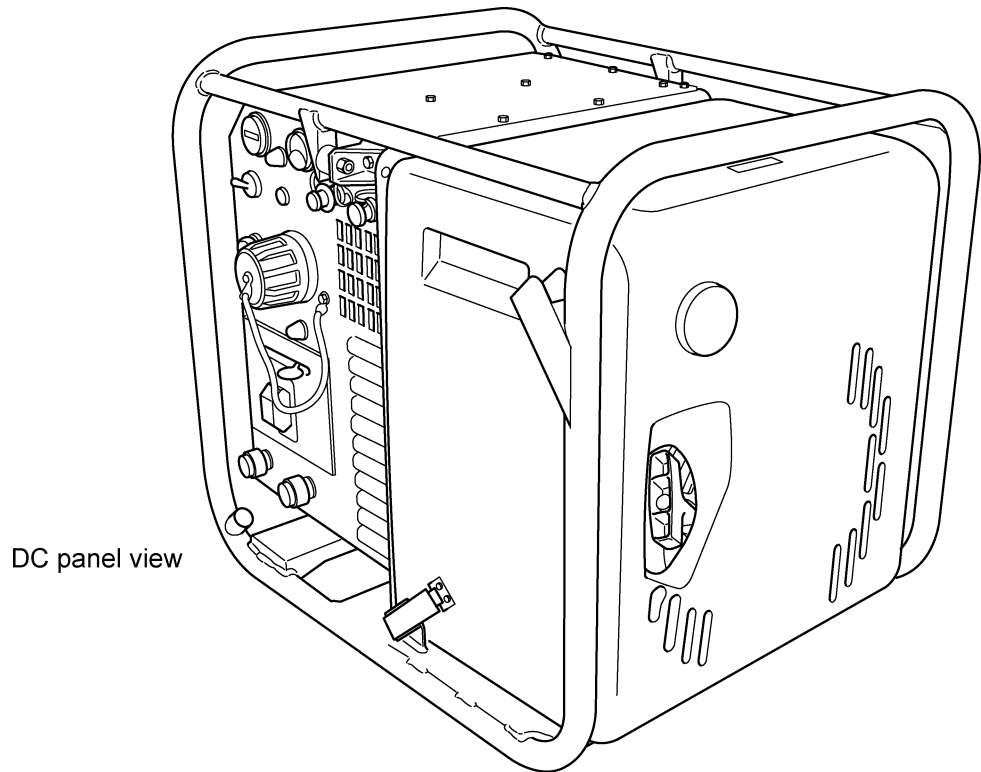
## **SYMBOLS**

22 There are no symbols applicable to this category.

---

**CHAPTER 1**  
**GENERAL INFORMATION**  
**CONTENTS**

	Page
Frontispiece.....	2
Index of related IPCs and sub-chapters.....	3
Index of main assemblies and sub-assemblies to related IPCs or part/drawing numbers and chapter .....	4
Index of illustrations to chapter and figure numbers .....	5



Lightweight Field Generator (LFG)

---

**INDEX OF RELATED IPCs AND SUB-CHAPTERS**

<b>Chap Plan No.</b>	<b>Chap 2 Sub-Chap No.</b>	<b>Item Name and (if applicable) Related IPC Reference No.</b>	<b>Part No./ Drawing No.</b>	<b>DMC Amry</b>	<b>NATO Stock No.</b>



---

**INDEX OF MAIN ASSEMBLIES AND SUB-ASSEMBLIES  
TO  
RELATED IPCs OR PART/DRAWING NUMBERS AND CHAPTER**

<b>Item</b>	<b>Part No.</b>	<b>Chapter</b>



---

**INDEX OF ILLUSTRATIONS  
TO  
CHAPTER AND FIGURE NUMBERS**

<b>Item</b>	<b>Chapter</b>	<b>Figure</b>
Accessories .....	2	14
Crankcase .....	2	9
Crankshaft.....	2	8
Cylinder head .....	2	6
Engine components .....	2	4
Generator set, diesel engine driven, 2 kW, 230/110V ac, 28V dc (Drumgrange Ltd).....	2	1
Injection equipment .....	2	11
Inverter and starters .....	2	3
Maintenance kit .....	2	15
Mounts, covers and frame.....	2	2
Oil pump .....	2	10
Panels and cables .....	2	12
Piston, con rod and cylinder .....	2	7
Rotor, stator and pulse pump.....	2	13
Timing case cover .....	2	5



---

**PAGE INTENTIONALLY LEFT BLANK**



---

**CHAPTER 2**  
**PARTS LIST**  
**GENERATOR SET DIESEL ENGINE DRIVEN**  
**CONTENTS**

	Page
Record of modifications .....	3



---

**PAGE INTENTIONALLY LEFT BLANK**



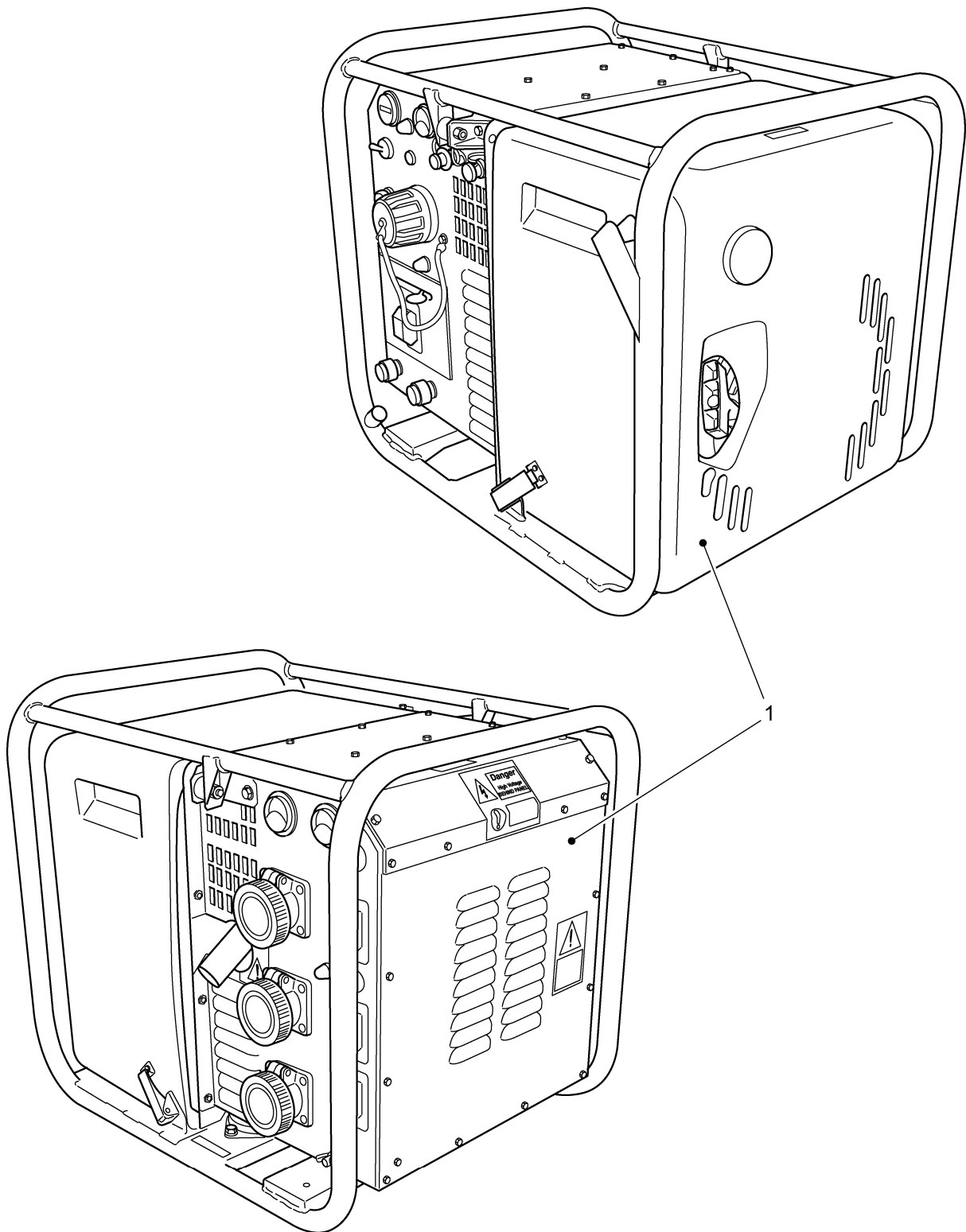


Fig 1 Generator set, diesel engine driven, 2 kW, 230/110 Vac, 28 Vdc (Drumgrange Ltd)

**PARTS LIST**

Fig 1 Item	DMC Army	NATO stock number	Item name	Part No./ Dwg No.	No. Off	Annotation (NSCM)
1	LFG2kW	6115-99-908-6784	GENERATOR SET, DIESEL ENGINE DRIVEN, 2 kW, 230/110 VAC, 28 VDC (DRUMGRANGE LTD)		REF	Asset Code JR 88173500
NI 2			. MOUNTS, COVERS AND FRAME			Refer to Fig 2
NI 3			. INVERTER AND STARTERS			Refer to Fig 3
NI 4			. ENGINE COMPONENTS			Refer to Fig 4
NI 5			. PANELS AND CABLES			Refer to Fig 12
NI 6			. ROTOR, STATOR AND PULSE PUMP			Refer to Fig 13
NI 7			. ACCESSORIES			Refer to Fig 14
NI 8			. MAINTENANCE KITS			Refer to Fig 15

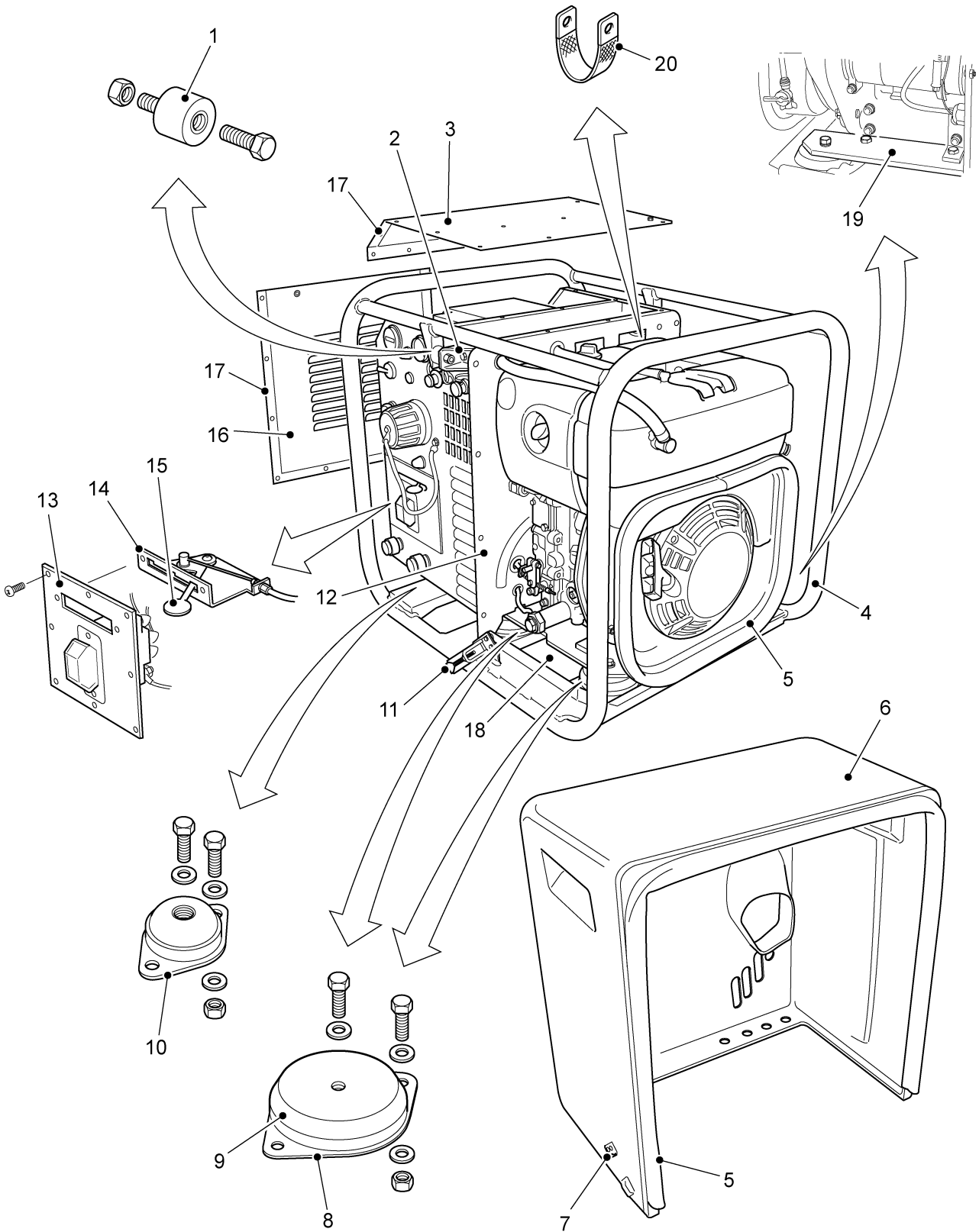


Fig 2 Mounts, covers and frame



**PARTS LIST**

Fig 2 Item	DMC Army	NATO stock number	Item name	Part No./ Dwg No.	No. Off	Annotation (NSCM)
0			MOUNTS, COVERS AND FRAME			
1	LFG2kW	5340-99-346-4393	. AVM TOP CONTROL BOX	2520MF13-45(M8)	2	
2	LFG2kW	5340-99-837-0498	. CONTROL BOX TOP MOUNT	040-749/28	1	
3	LFG2kW	5340-99-724-3007	. CONTROL COVER TOP	040-749/13B	1	
4	LFG2kW	5999-99-748-2206	. TUBULAR FRAME ASSEMBLY	040-749/15	1	
5	LFG2kW	9390-14-501-5754	. SIDE SEAL	1011-12	2.9 MR	A/R
6	LFG2kW	6115-99-225-8717	. ACOUSTIC COVER	040-749/01	1	
7	LFG2kW	5340-99-131-9231	. KEEPER, BLACK STAINLESS	K4/2338-63	2	
8	LFG2kW	5340-99-571-7178	. AVM ENGINE	FM8027-45C	4	
9	LFG2kW	6115-99-151-8414	. PLASTIC COVER AVM	070-496	4	
10	LFG2kW	5340-99-549-8878	. AVM WITH TOECAP	FM209/9/9/45	2	
11	LFG2kW	5340-01-521-5980	. DRAW LATCH	91-512-25	2	
12	LFG2kW	2815-99-979-1693	. ENGINE COVER BAFFLE	040-749/129	1	
13	LFG2kW	5340-99-226-1119	. PANEL, CONTROL BOX SIDE	040-749/36	1	
14	LFG2kW	5340-99-994-6063	. BRACKET, THROTTLE CONTROL	040-749/31	1	
15	LFG2kW	5340-99-476-6407	. THROTTLE CONTROL LEVER	040-749/30	1	
16	LFG2kW	5340-99-794-9587	. CONTROL COVER LOUVRE	040-749/46	1	
17	LFG2kW	5999-99-519-4302	. RFI C-WRAP 18 MM x 2 MM	RFI-CWRAP-18X2-15	10 MR	A/R
18	LFG2kW	2510-99-925-1095	. ENGINE SUPPORT BRACKET, RH	040-749/16X	1	
19	LFG2kW	2510-99-851-0661	. ENGINE SUPPORT BRACKET. LH	040-749/23X	1	
20	LFG2kW	6150-99-702-8025	. BRAID FLAT 10 SQ MM, 85 MM LONG, M8 TO M5	017607	1	Exhaust manifold to control panel housing

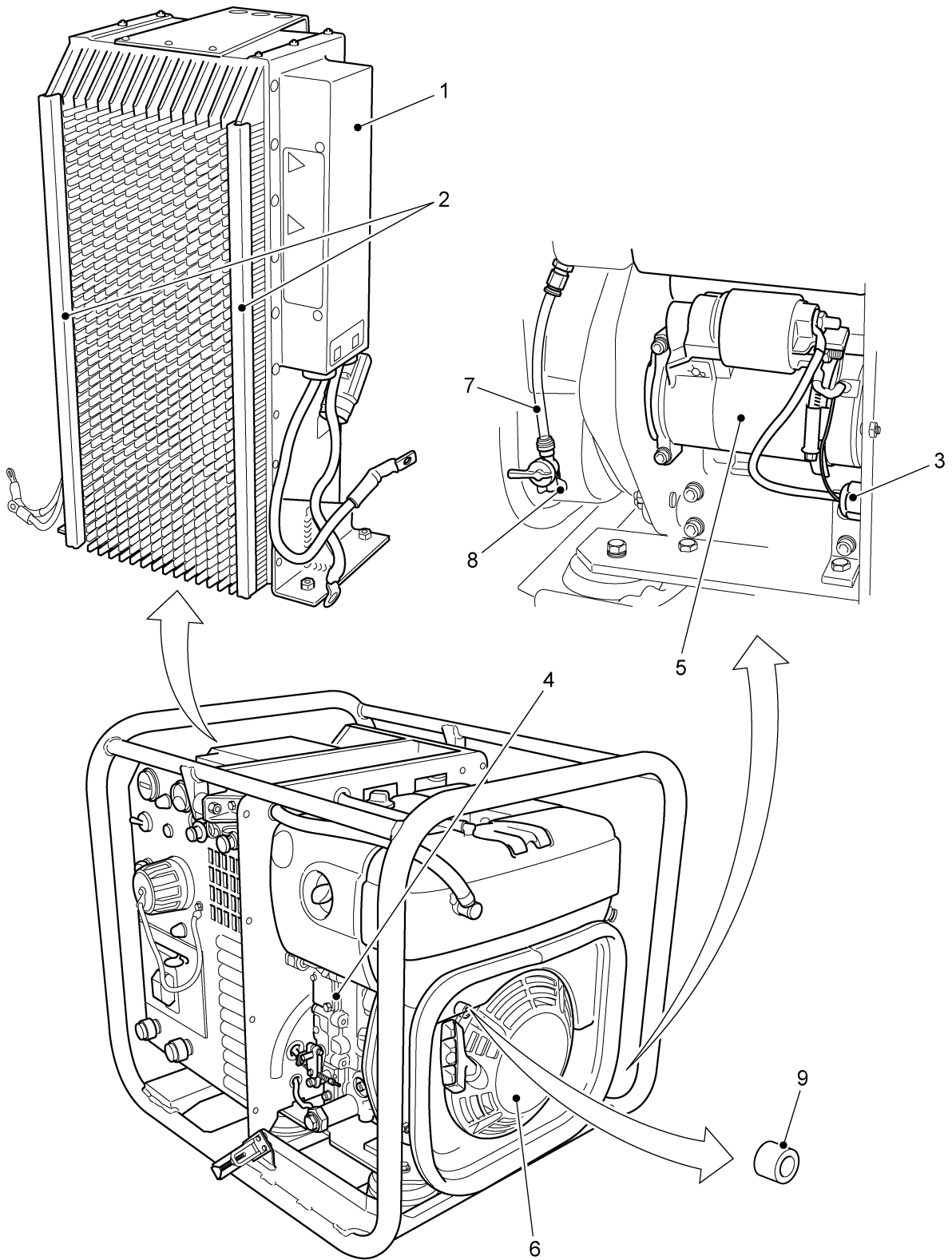


Fig 3 Inverter and starters

**PARTS LIST**

Fig 3 Item	DMC Army	NATO stock number	Item name	Part No./ Dwg No.	No. Off	Annotation (NSCM)
0			INVERTER AND STARTERS		REF	
1	LFG2kW	6130-99-375-9457	. INVERTOR/REGULATOR	022-002	1	
2	LFG2kW	9390-12-363-1368	. EDGE PROTECTION	1010-10	0.7 MR	A/R
3	LFG2kW	5975-99-254-5275	. CABLE GLAND	135 313	1	
4(1)	LFG2kW	2815-12-369-9447	. ENGINE ASSEMBLY	017 961 03		
				1B20-S-204C	1	
4(2)	LFG2kW	2815-12-366-5933	. ENGINE ASSEMBLY	017 961 04		
				1B20-S-204D	1	
5	LFG2kW	2920-12-363-2214	.. START MOTOR, ELECTRIC	50483300	1	
6	LFG2kW	2990-01-523-7100	.. STARTER, RECOIL	014938	1	
7	LFG2kW	4720-99-727-1554	.. FUEL DRAIN ASSEMBLY	170-482	1	
8	LFG2kW	5340-99-216-0558	.. SPRING CLIP	151-206	1	
9	LFG2kW	5365-12-365-8529	. STAND-OFF (PULL START MECHANISM)	04139000	4	
NI 10	LFG2kW	5340-12-389-3251	.. CLAMP MOUNTING, STARTER MOTOR	14099100.100 3	1	

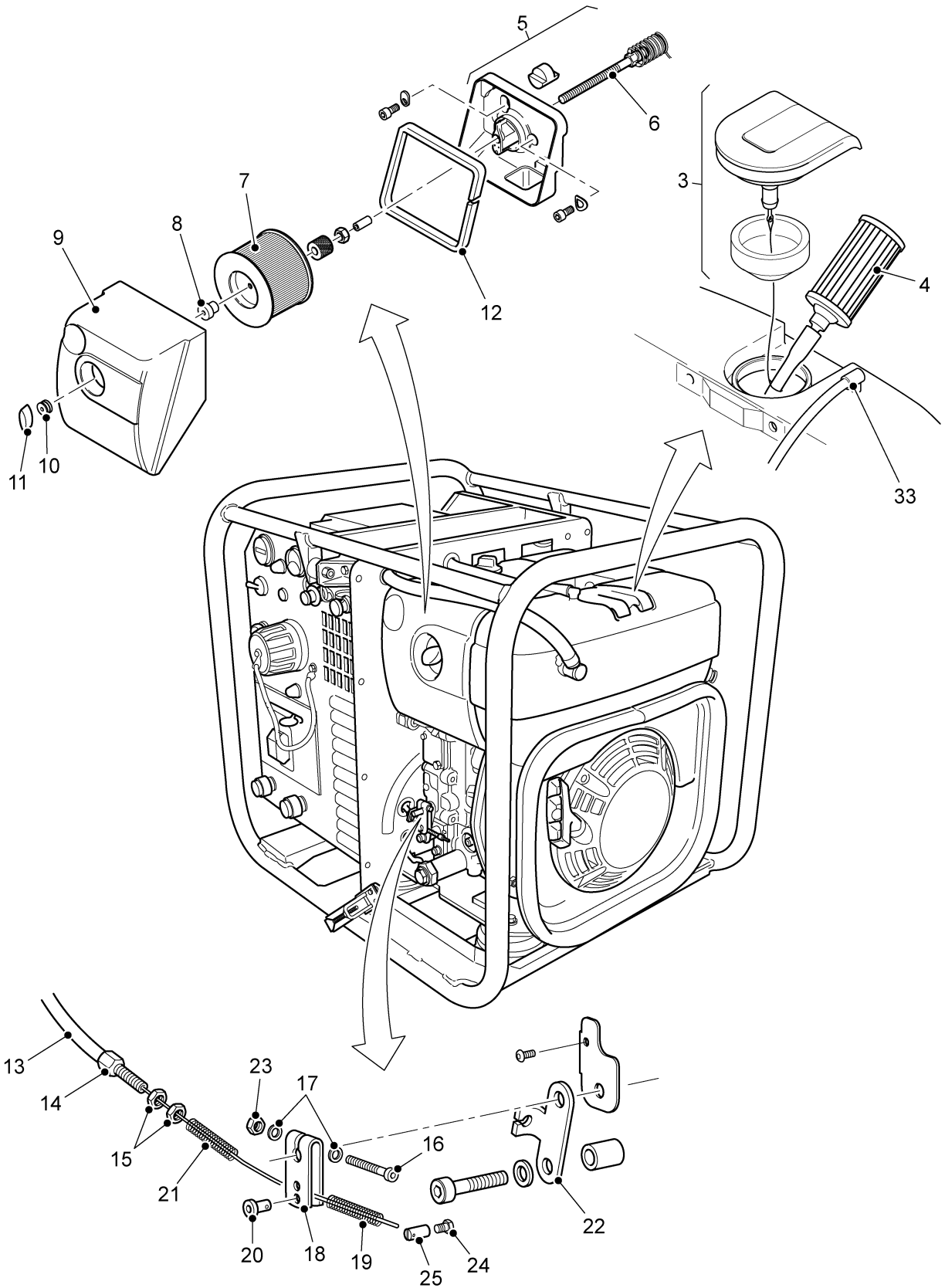


Fig 4 Engine components

## PARTS LIST

Fig 4 Item	DMC Army	NATO stock number	Item name	Part No./ Dwg No.	No. Off	Annotation (NSCM)
0			ENGINE COMPONENTS		REF	
1(1)	LFG2kW	2815-12-369-9447	. ENGINE ASSEMBLY	017 961 03	1	1B20-S-204C
1(2)	LFG2kW	2815-12-366-5933	. ENGINE ASSEMBLY	017 961 04	1	1B20-S-204D
2	LFG2kW	2910-99-870-2841	.. HOT CLIMATE FUEL TANK	017533	1	
3	LFG2kW	2590-12-366-2518	.. CAP FILLER OPENING (FUEL CAP)	015 353 02	1	
4	LFG2kW	2910-12-364-1980	.. FILTER ELEMENT, FUEL	017 854 00	1	
5	LFG2kW	2940-12-387-0459	.. AIR FILTER HOUSING, BASE ASSEMBLY	014996	1	
6	LFG2kW	2920-12-364-6611	... GLOW PLUG (COLD START DEVICE/ ELEMENT RETAINER)	017 353 00	1	
7	LFG2kW	2940-12-355-8118	.. AIR CLEANER, ELEMENT	017 343 00	1	
8	LFG2kW	5310-12-366-0198	.. KNURLED NUT M6 (AIR CLEANER ELEMENT SECURING)	504 543 00	1	
9	LFG2kW	5340-14-543-5711	.. COVER, AIR FILTER HOUSING	016 991 01	1	
10	ONAN	5325-12-365-9377	.. WASHER (AIRFILTER SECURING)	504 358 00	1	
11	LFG2kW	5310-01-525-7464	.. NUT, PLAIN WING (AIR FILTER COVER)	504 522 00	1	
12	LFG2kW	5330-12-363-4243	.. SEALING STRIP AIR FILTER	052 161 00	1	
13	LFG2kW	2990-99-260-9337	.. CABLE, ENGINE SPEED CONTROL	060-806	1	
14	LFG2kW	4730-12-383-4040	.. ADJUSTER THROTTLE CABLE	051 412 00	1	
15	G1	5310-12-156-4991	.. 1/2 NUT M6 (LOCKING THROTTLE CABLE ADJUSTER)	501 444 00	2	
16		NP	.. BOLT M5 x 30 MM 8.8 A3C	505 119 00	1	
17	4ND	5310-12-174-2405	.. WASHER 5.3 MM ID	502 163 00	2	
18	LFG2kW	1680-01-524-5920	.. THROTTLE LEVER	051 177 00	1	
19	LFG2kW	5360-12-383-2069	.. SPRING, THROTTLE CABLE (HATZ)	504 846 00	1	
20	LFG2kW	4320-01-526-2833	.. CABLE STOPPER (THROTTLE)	504 831 00	2	
21	LFG2kW	5360-99-613-6131	.. SPRING, THROTTLE CABLE (HGI)	151-225	1	
22	LFG2kW	5340-99-151-8402	.. CLAMP, THROTTLE CABLE	040-749/32	1	
23		NP	.. NUT	500 943 00	1	
24		NP	.. BOLT M4 x 10 MM	500 250 00	1	
25		NP	.. TERMINATION, CABLE	504 830 00	1	
NI 26			.. TIMING CASE COVER			Refer to Fig 5
NI 27			.. CYLINDER HEAD			Refer to Fig 6
NI 28			.. PISTON, CON ROD AND CYLINDER			Refer to Fig 7
NI 29			.. CRANKSHAFT			Refer to Fig 8
NI 30			.. CRANKCASE			Refer to Fig 9
NI 31			.. OIL PUMP			Refer to Fig 10
NI 32			.. INJECTION EQUIPMENT			Refer to Fig 11
33		4730-12-380-7642	. ELBOW HOSE	017603	1	

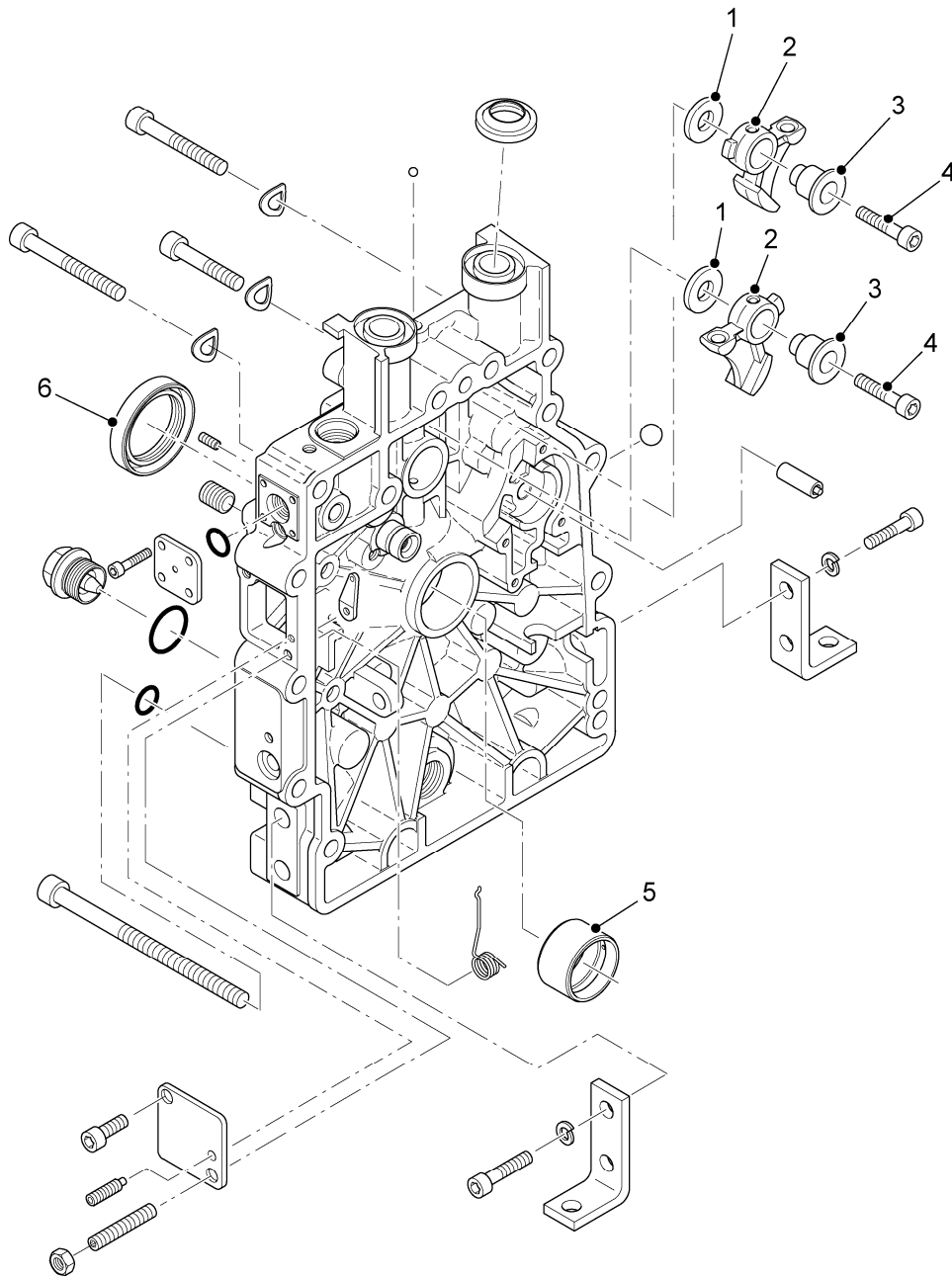


Fig 5 Timing case cover

**PARTS LIST**

Fig 5 Item	DMC Army	NATO stock number	Item name	Part No./ Dwg No.	No. Off	Annotation (NSCM)
0			TIMING CASE COVER			REF
1	LFG2kW	5310-12-337-2909	. WASHER, (CAM FOLLOWER)	037 941 00	2	
2	LFG2kW	2815-12-365-8868	. CAM FOLLOWER	050 534 00	2	
3	LFG2kW	3120-12-337-3889	. CAM FOLLOWER SPINDLE	037 942 01	2	
4	LFG2kW	5306-01-549-8680	. CAP HEAD BOLT M6 x 25 MM	504 579 00	2	
5	LFG2kW	3120-12-365-8866	. BUSHING, CRANKSHAFT MAIN BEARING (TIMING COVER END)	050 531 00	1	
6	LFG2kW	5330-99-380-7136	. SEAL, CRANKSHAFT TIMING CASE END	400 337 01	1	

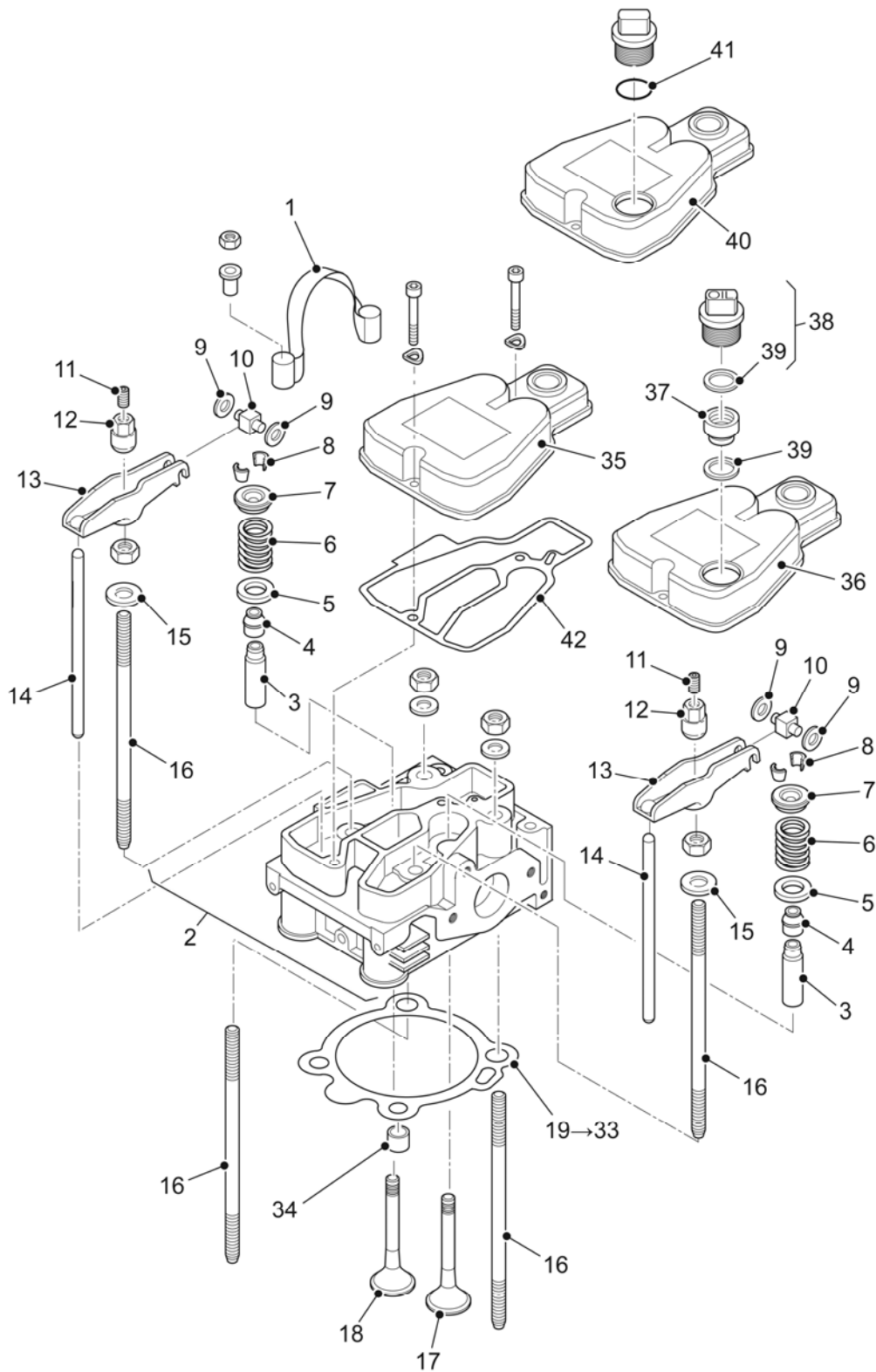


Fig 6 Cylinder head



**PARTS LIST**

Fig 6 Item	DMC Army	NATO stock number	Item name	Part No./ Dwg No.	No. Off	Annotation (NSCM)
0			CYLINDER HEAD		REF	
1	LFG2kW	3940-12-366-2519	. LIFTING STRAP, ENGINE	041 176 10	1	
2(1)	LFG2kW	4310-12-366-0650	. CYLINDER HEAD COMPLETE W/VALVE GUIDES (EPA 1)	015 002 40	1	For Engine #s 10028xxxxxxx
2(2)	LFG2kW	2815-12-384-9815	. CYLINDER HEAD COMPLETE W/VALVE GUIDES (EPA 2)	018 576 02	1	For Engine #s 30030xxxxxxx
2(3)	LFG2kW	2815-12-384-0514	. CYLINDER HEAD COMPLETE W/VALVE GUIDES	015 002 42	1	
3	LFG2kW	4310-12-366-0651	. VALVE GUIDE	051 194 00	2	
4	LFG2kW	2815-12-365-8862	. SEAL, VALVE STEM	504 258 00	2	
5	LFG2kW	5310-12-365-9900	. WASHER, (VALVE SPRING BASE SEAT)	040 937 00	2	
6	LFG2kW	5360-12-365-8671	. VALVE SPRING	040 936 00	2	
7	LFG2kW	5310-12-366-0649	. SPRING SEAT, VALVE	040 938 00	2	
8	LFG2kW	2815-12-365-8861	. COLLET, VALVE	504 257 00	4	
9	LFG2kW	5310-12-365-9899	. WASHER, VALVE TAPPET	052 407 00	4	
10	LFG2kW	5340-12-365-8531	. VALVE TAPPET	050 911 01	2	
11	LFG2kW	5305-12-181-3588	. SCREW GRUB M8 (VALVE CLEARANCE ADJUSTMENT)	505 131 00	2	
12	LFG2kW	5310-12-366-0314	. NUT/ROCKER SEAT	050 547 00	2	
13	LFG2kW	2815-12-385-2178	. ROCKER ARM, ENGINE POPPET VALVE OPENING	050 509 02	2	
14	LFG2kW	2815-12-365-8863	. PUSHROD	050 540 00	2	
15	LFG2kW	5310-12-365-9901	. WASHER, CYLINDER HEAD STUD	050 612 01	4	
16	LFG2kW	5307-12-366-0066	. STUD, CYLINDER HEAD M8 x 128 MM	050 625 00	4	
17	LFG2kW	2815-12-365-8864	. VALVE INTAKE	050 532 00	1	
18	LFG2kW	2815-12-365-8865	. VALVE EXHAUST	050 533 00	1	
19	LFG2kW	5330-12-366-0954	. GASKET CYLINDER HEAD (SHIM) 0.3 MM	050 594 00	1	} Refer to Cat 523 to determine correct size required
20	LFG2kW	5330-12-384-0595	. GASKET CYLINDER HEAD (SHIM) 0.35 MM	042 520 00	1	
21	LFG2kW	5330-12-366-0955	. GASKET CYLINDER HEAD (SHIM) 0.4 MM	050 595 00	1	
22	LFG2kW	5330-12-384-0598	. GASKET CYLINDER HEAD (SHIM) 0.45 MM	042 521 00	1	
23	LFG2kW	5330-12-366-0956	. GASKET CYLINDER HEAD (SHIM) 0.5 MM	050 596 00	1	
24	LFG2kW	5330-12-384-0600	. GASKET CYLINDER HEAD (SHIM) 0.55 MM	042 522 00	1	
25	LFG2kW	5330-12-366-0957	. GASKET CYLINDER HEAD (SHIM) 0.6 MM	050 597 00	1	
26	LFG2kW	5330-12-384-0636	. GASKET CYLINDER HEAD (SHIM) 0.65 MM	042 523 00	1	
27	LFG2kW	5330-12-366-0958	. GASKET CYLINDER HEAD (SHIM) 0.7 MM	050 598 00	1	
28	LFG2kW	5330-12-384-0638	. GASKET CYLINDER HEAD (SHIM) 0.75 MM	042 524 00	1	
29	LFG2kW	5330-12-366-0959	. GASKET CYLINDER HEAD (SHIM) 0.8 MM	050 599 00	1	
30	LFG2kW	5330-12-384-0640	. GASKET CYLINDER HEAD (SHIM) 0.85 MM	042 525 00	1	
31	LFG2kW	5330-12-366-0960	. GASKET CYLINDER HEAD (SHIM) 0.9 MM	050 600 00	1	
32	LFG2kW	5330-12-362-7292	. GASKET CYLINDER HEAD (SHIM) 0.95 MM	042 526 00	1	
33	LFG2kW	5330-12-366-0961	. GASKET CYLINDER HEAD (SHIM) 1.0 MM	050 601 00	1	
34	LFG2kW	5330-12-366-0962	. LOCATING RING, CYLINDER HEAD & GASKET	040 075 00	1	
35	LFG2kW	2815-12-383-4138	. ROCKER COVER ENGINE	050 473 21	1	

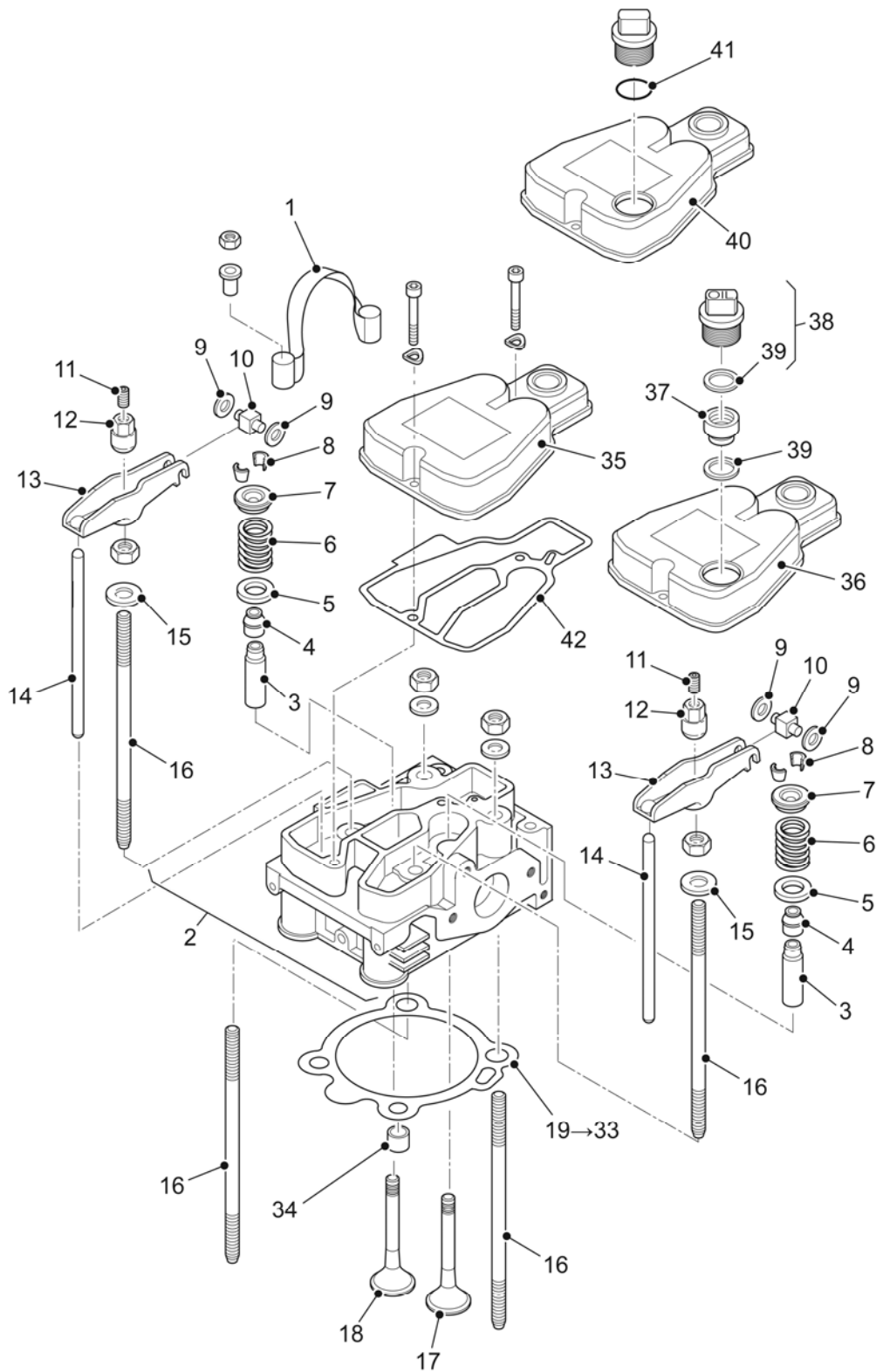


Fig 6 Cylinder head

**PARTS LIST**

Fig 6 Item	DMC Army	NATO stock number	Item name	Part No./ Dwg No.	No. Off	Annotation (NSCM)
36	LFG2kW	2815-12-383-0051	CYLINDER HEAD - Contd . ROCKER COVER WITH FILLER NECK (ENGINE)	051 374 31	1	For Engine #s 30030xxxxxxx
37	LFG2kW	2815-12-383-4124	. EXTENSION/FILLER NECK (ENGINE ROCKER COVER)	053 211 00	1	For Engine #s 30030xxxxxxx
38	LFG2kW	2590-01-282-5087	. FILLER CAP (ENGINE ROCKER COVER)	019 365 00	1	For Engine #s 30030xxxxxxx
39	LFG2kW	5330-12-383-2647	. . O- RING FILLER NECK & CAP	052 784 01	2	For Engine #s 30030xxxxxxx
40		NP	. ROCKER COVER ENGINE	051 374 30	1	For Engine #s 10028xxxxxxx
41		NP	. O-RING, FILLER CAP	052 784 00	1	For Engine #s 10028xxxxxxx
42	LFG2kW	5330-12-356-4207	. GASKET, ENGINE ROCKER COVER	050 557 00	1	

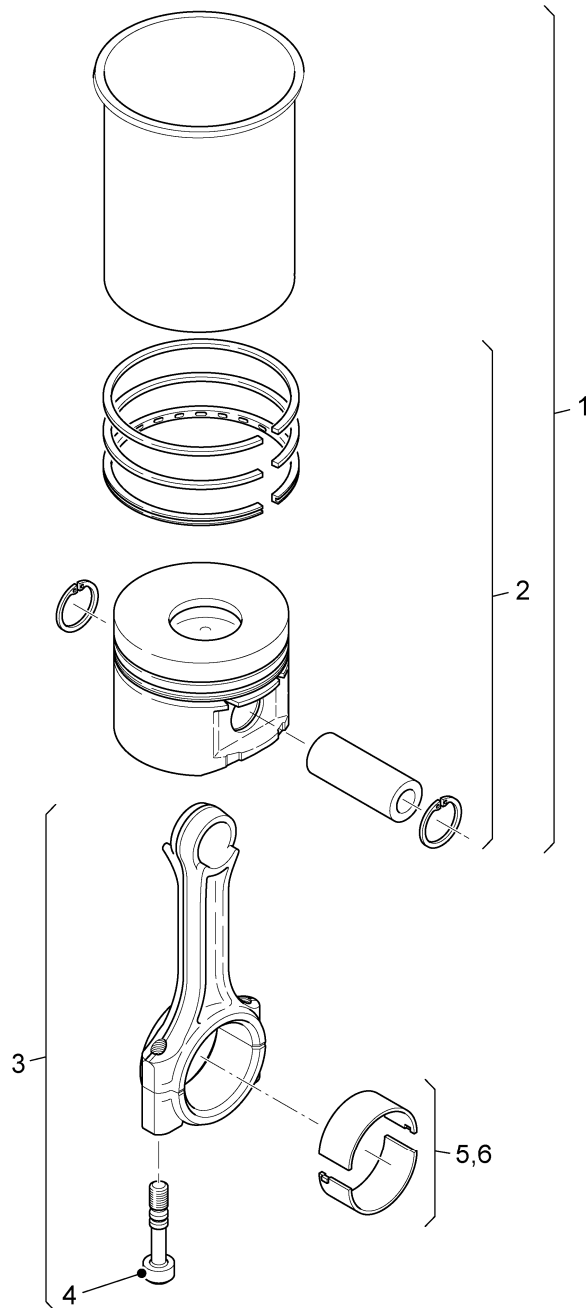


Fig 7 Piston, con rod and cylinder

**PARTS LIST**

Fig 7 Item	DMC Army	NATO stock number	Item name	Part No./ Dwg No.	No. Off	Annotation (NSCM)
0			PISTON, CON ROD AND CYLINDER		REF	
1(1)	LFG2kW	2815-01-546-4611	. CYLINDER LINER W/PISTON	015 545 20	1	For Engine #s 30030xxxxxxx
1(2)	LFG2kW	2815-12-384-0473	. CYLINDER LINER W/PISTON	015 545 10	1	For Engine #s 10028xxxxxxx
2(1)	LFG2kW	2815-12-365-8871	. . PISTON COMPLETE WITH PIN & RINGS	013 481 10	1	For Engine #s 10028xxxxxxx
2(2)	LFG2kW	2815-12-384-0475	. . PISTON COMPLETE WITH PIN & RINGS	013 481 20	1	For Engine #s 30030xxxxxxx
3	LFG2kW	2815-12-365-8872	. CONNECTING ROD COMPLETE	015 001 00	1	
4	LFG2kW	5305-12-366-0316	. . BOLT, CON ROD BIG END CAP	050 469 00	1	
5	LFG2kW	3120-01-527-3744	. BEARING SHELL BIG END	015 757 00	1	
6	LFG2kW	3120-12-384-0467	. BEARING SHELL BIG END (0.5 MM UNDER SIZE)	015 819 00	1	

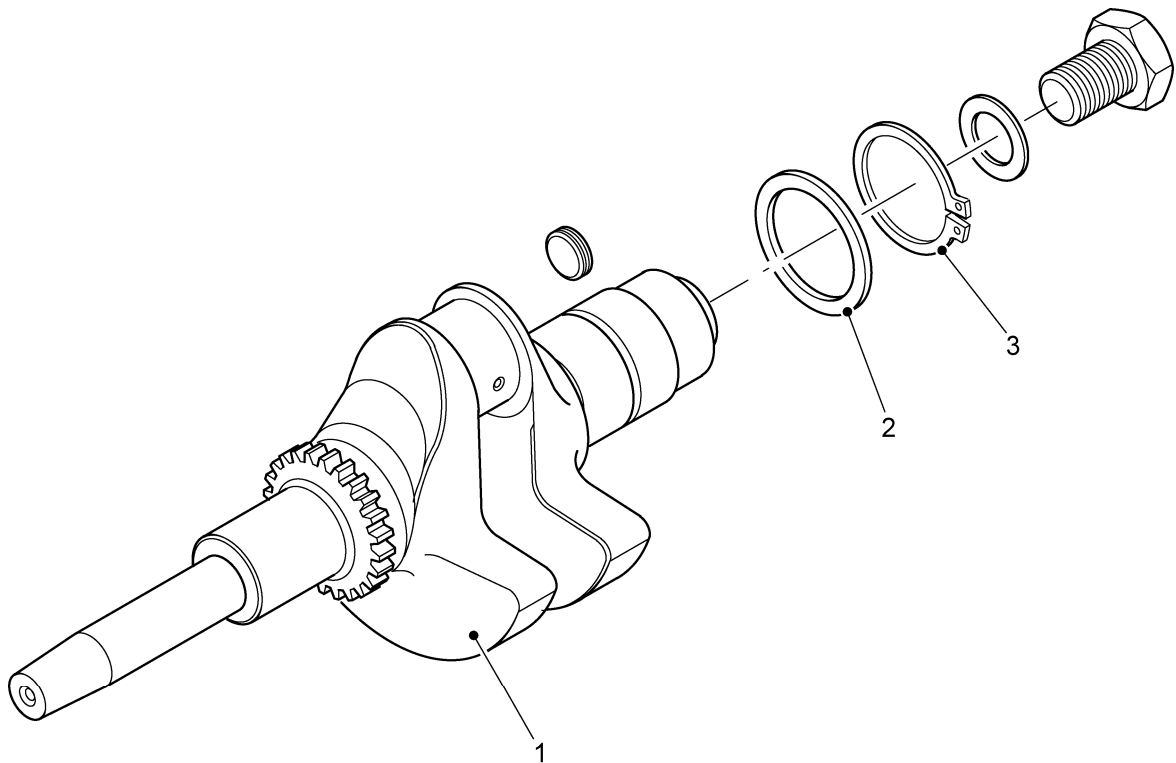


Fig 8 Crankshaft

**PARTS LIST**

Fig 8 Item	DMC Army	NATO stock number	Item name	Part No./ Dwg No.	No. Off	Annotation (NSCM)
0			CRANKSHAFT		REF	
1	LFG2KW	2815-12-384-0477	. CRANKSHAFT	018 609 00	1	
2	LFG2KW	5365-12-174-2626	. WASHER/PACKING (CRANKSHAFT FLY WHEEL END)	400 325 00	1	
3	6MT1	5325-99-910-8246	. CIRCLIP/SPRING CLIP (CRANKSHAFT FLY WHEEL END)	501 206 00	1	

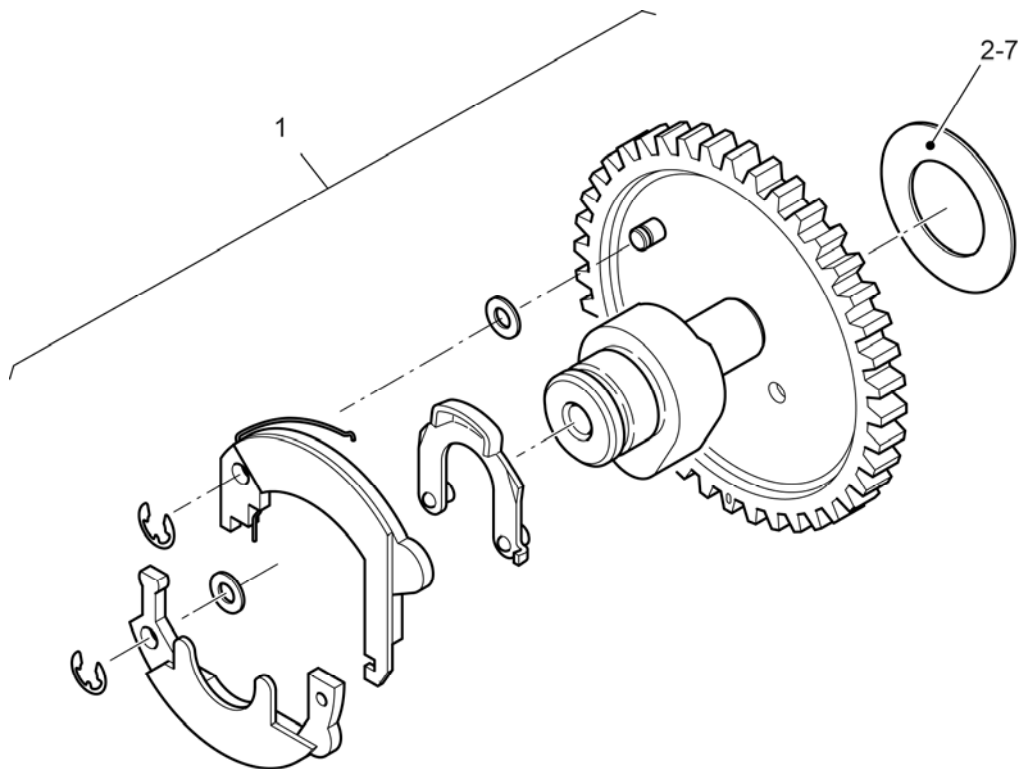


Fig 9 Camshaft



**PARTS LIST**

Fig 9 Item	DMC Army	NATO stock number	Item name	Part No./ Dwg No.	No. Off	Annotation (NSCM)
0			CAMSHAFT		REF	
1(1)	LFG2kW	2815-12-365-8870	. CAMSHAFT	015 035 22	1	For Engine #s 10028xxxxxxxx
1(2)	LFG2kW	2910-12-386-9673	. CAMSHAFT	015 035 23	1	Engine #s 30030xxxxxxxx
2	LFG2kW	5310-12-366-0069	. SHIM 0.9 MM	041 217 00	1	
3	LFG2kW	5310-12-365-9903	. SHIM 1.0 MM	041 121 00	1	
4	LFG2kW	5310-12-365-9904	. SHIM 1.1 MM	041 122 00	1	
5	LFG2kW	5310-12-365-9905	. SHIM 1.2 MM	041 123 00	1	
6	LFG2kW	5310-12-365-9906	. SHIM 1.3 MM	041 251 00	1	
7	LFG2kW	5310-12-365-9907	. SHIM 1.4 MM	041 252 00	1	

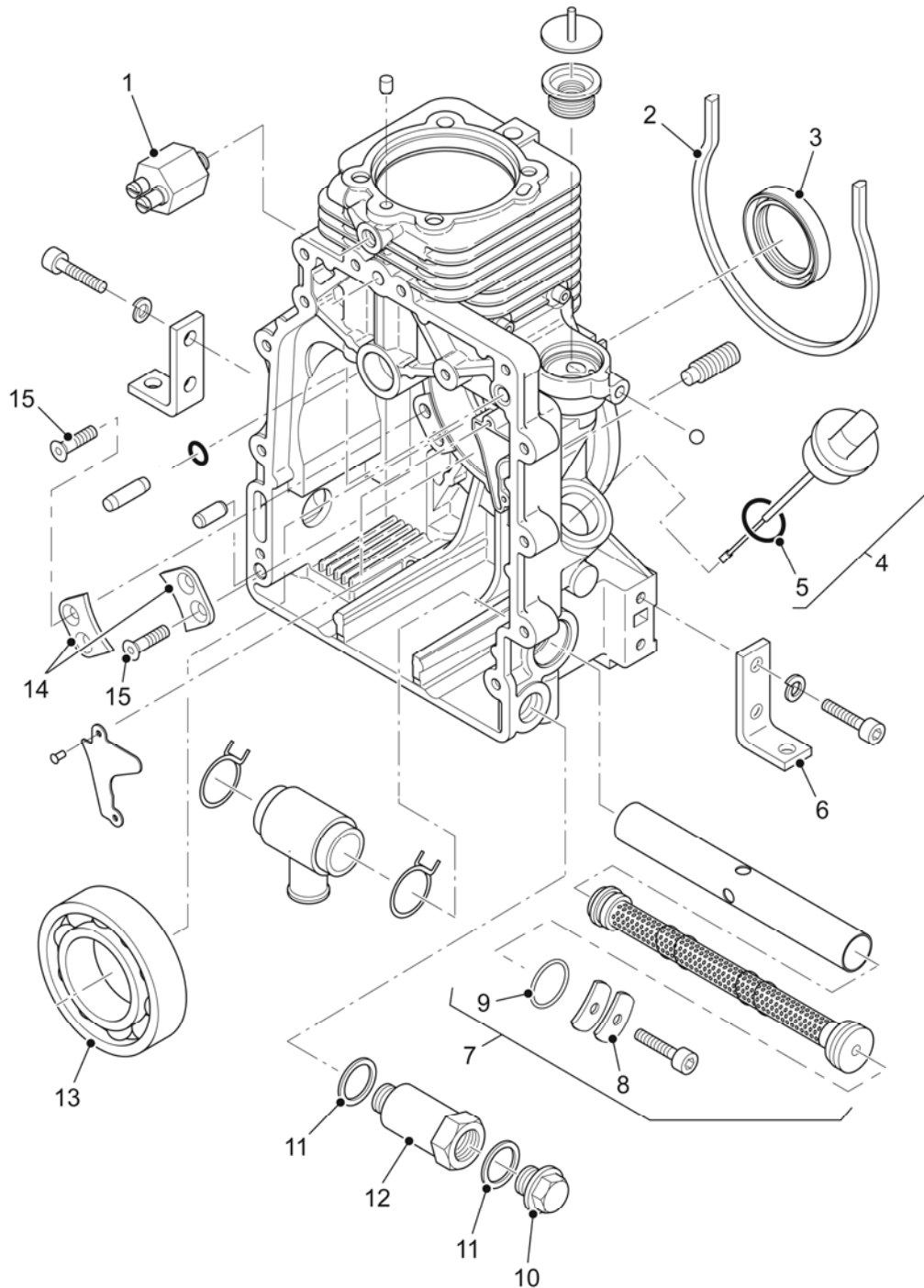


Fig 10 Crankcase

**PARTS LIST**

Fig 10 Item	DMC Army	NATO stock number	Item name	Part No./ Dwg No.	No. Off	Annotation (NSCM)
0			CRANKCASE			REF
1	LFG2kW	5930-12-176-2232	. SWITCH, OIL PRESSURE	501 555 00	1	
2	LFG2kW	5330-12-366-1913	. SEAL, CRANKCASE - FLYWHEEL HOUSING	040 980 00	1	
3	LFG2kW	5330-01-525-9672	. SEAL, CRANKSHAFT FLYWHEEL END	504 232 00	1	
4	LFG2kW	6680-12-383-0185	. FILLER CAP WITH DIP STICK (OIL LEVEL)	013 160 00	1	
5	LFG2kW	5330-12-355-7484	. . O- RING, DIP STICK	041 250 00	1	
6	LFG2kW	5342-12-366-2148	. L- BRACKET, ENGINE MOUNT	040 993 02	4	
7	LFG2kW	2940-12-346-9235	. STRAINER, ENGINE OIL FILTER	015 427 02	1	
8	LFG2kW	5360-12-363-5186	. . SPRING, ENGINE OIL FILTER	051 482 00	2	
9	LFG2kW	5331-12-363-4241	. . O-RING, ENGINE OIL FILTER	504 759 01	1	
10	7SDP	5365-12-142-8108	. PLUG, OIL DRAIN	503 731 00	1	
11	LFG2kW	5330-12-156-4535	. GASKET, OIL DRAIN	504 698 00	2	
12	LFG2kW	4730-99-154-2856	. OIL DRAIN PIPE	040-749/40	1	
13	LFG2kW	3110-01-527-3743	. BALL BEARING, CRANKSHAFT MAIN BEARING (CRANKCASE)	504 233 00	1	
14	LFG2kW	3110-12-365-8873	. PLATE RETAINING, CRANKSHAFT MAIN BEARING (CRANKCASE)	040 944 00	2	
15	LFG2kW	5305-99-213-6935	. SCREW COUNTER SUNK, (RETAINING PLATE) (M6 x 16 MM)	505 643 00	4	

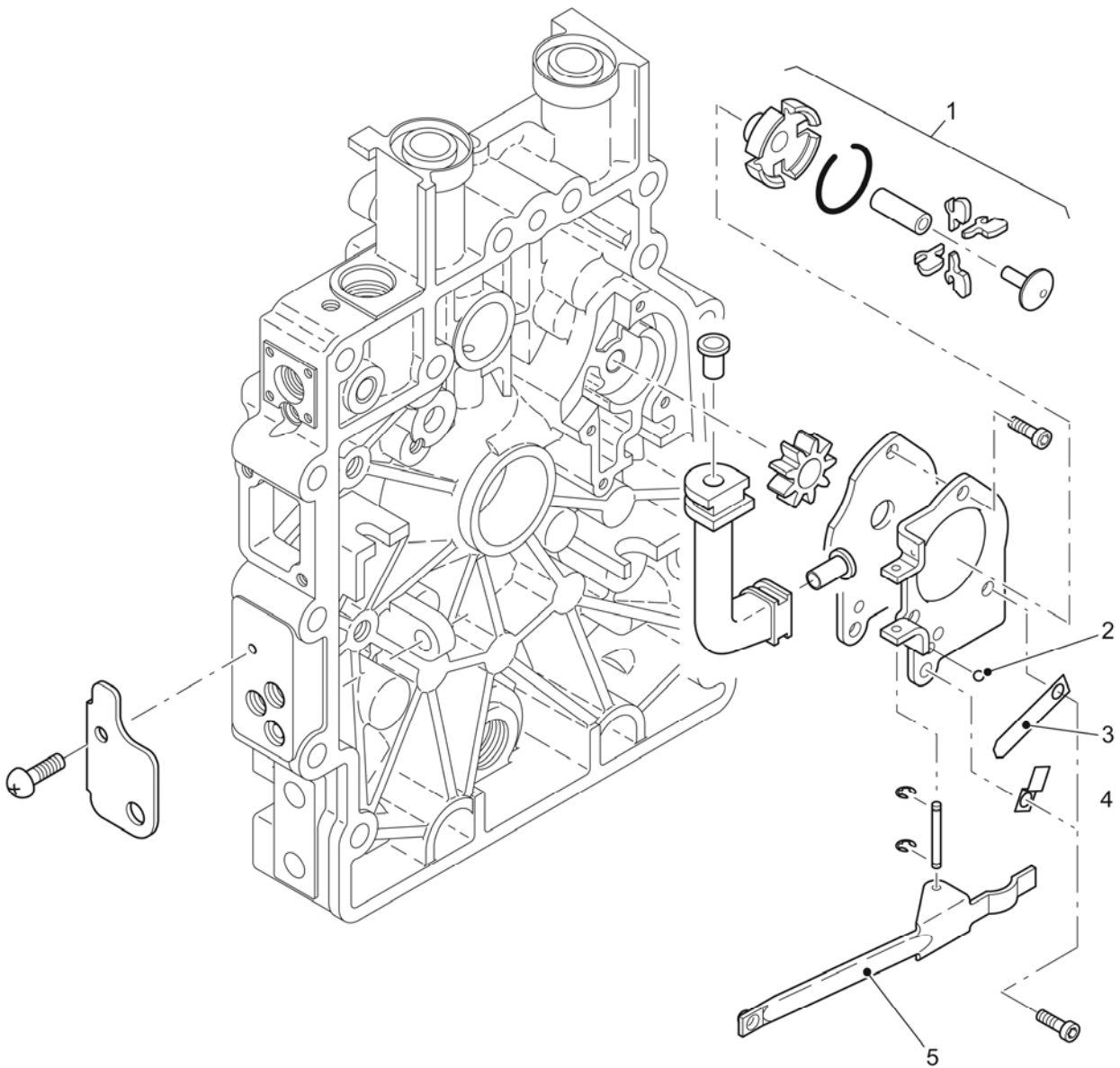


Fig 11 Oil pump

**PARTS LIST**

Fig 11 Item	DMC Army	NATO stock number	Item name	Part No./ Dwg No.	No. Off	Annotation (NSCM)
0			OIL PUMP		REF	
1	LFG2kW	2990-12-384-0484	. OIL PUMP ENGINE	018 321 00	1	
2	LFG2kW	3110-01-525-1043	. BALL VALVE, (OIL PRESSURE RELIEF VALVE)	504 479 00	1	
3	LFG2kW	5360-12-365-8676	. LEAF SPRING, (OIL PRESSURE RELIEF VALVE)	050 973 00	1	
4	LFG2kW	5340-12-365-8675	. RETAINING CLIP, (OIL PRESSURE RELIEF VALVE)	050 971 00	1	
5	LFG2kW	2910-12-365-9076	. REVERSE MOTION LEVER	050 794 01	1	

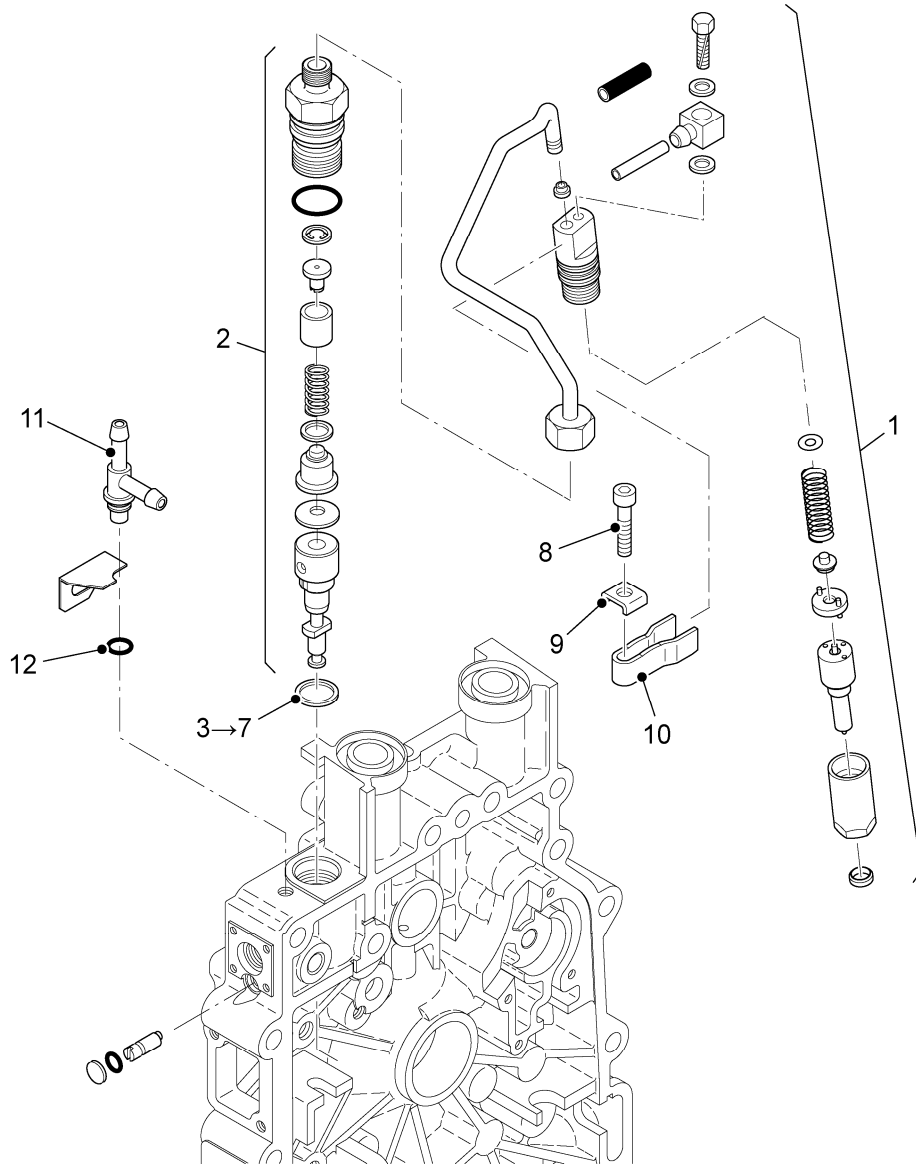


Fig 12 Injection equipment

**PARTS LIST**

Fig 12 Item	DMC Army	NATO stock number	Item name	Part No./ Dwg No.	No. Off	Annotation (NSCM)
0			INJECTION EQUIPMENT		REF	
1(1)	LFG2kW	2910-12-363-2210	. INJECTOR ASSY, FUEL (WHITE DOT) (EPA 1)	016 498 10	1	Engine Assembly 01796103 1B20-S-204C ONLY
1(2)	LFG2kW	2910-12-369-9446	. NOZZLE, FUEL INJECTION (YELLOW DOT) (EPA 2)	013 938 00	1	Engine Assembly 01796103 1B20-S-204D ONLY
2(1)	LFG2kW	2910-12-363-2212	. INJECTOR ASSY FUEL (DISTRIBUTION VALVE) (WHITE DOT) (EPA 1)	013 222 11	1	Engine Assembly 01796103 1B20-S-204C ONLY
2(2)	LFG2kW	2910-12-369-9444	. PUMP, FUEL METERING & DISTRIBUTION (YELLOW DOT) (EPA 2)	013 222 20	1	Engine Assembly 01796103 1B20-S-204D ONLY
3	LFG2kW	5365-12-365-8664	.. PACKING/SHIM FIP TIMING 0.2 MM	040 963 00	1	
4	LFG2kW	5365-12-365-8665	.. PACKING/SHIM FIP TIMING 0.3 MM	040 964 00	1	
5	LFG2kW	5365-12-365-8666	.. PACKING/SHIM FIP TIMING 0.4 MM	040 965 00	1	
6	LFG2kW	5365-12-365-8667	.. PACKING/SHIM FIP TIMING 0.5 MM	040 966 00	1	
7	LFG2kW	5365-12-365-8668	.. PACKING/SHIM FIP TIMING 0.6 MM	040 967 00	1	
8	LFG2kW	5305-01-406-0008	. BOLT M6 x 30 DIN 912-8.8 A3C, INJECTOR CLAMP	503 239 00	1	
9	LFG2kW	5310-12-365-9523	. PLATE, INJECTOR CLAMP	050 893 00	1	
10	LFG2kW	2910-12-365-9072	. CLAMP INJECTOR	050 567 00	1	
11	LFG2kW	4730-12-365-8442	. NIPPLE, (FUEL TEE PIECE)	017 568 00	1	
12	LFG2kW	5331-12-311-8239	. O-RING, 7.5 MM I/D X 1.5 MM THICK RUBBER	018418	1	

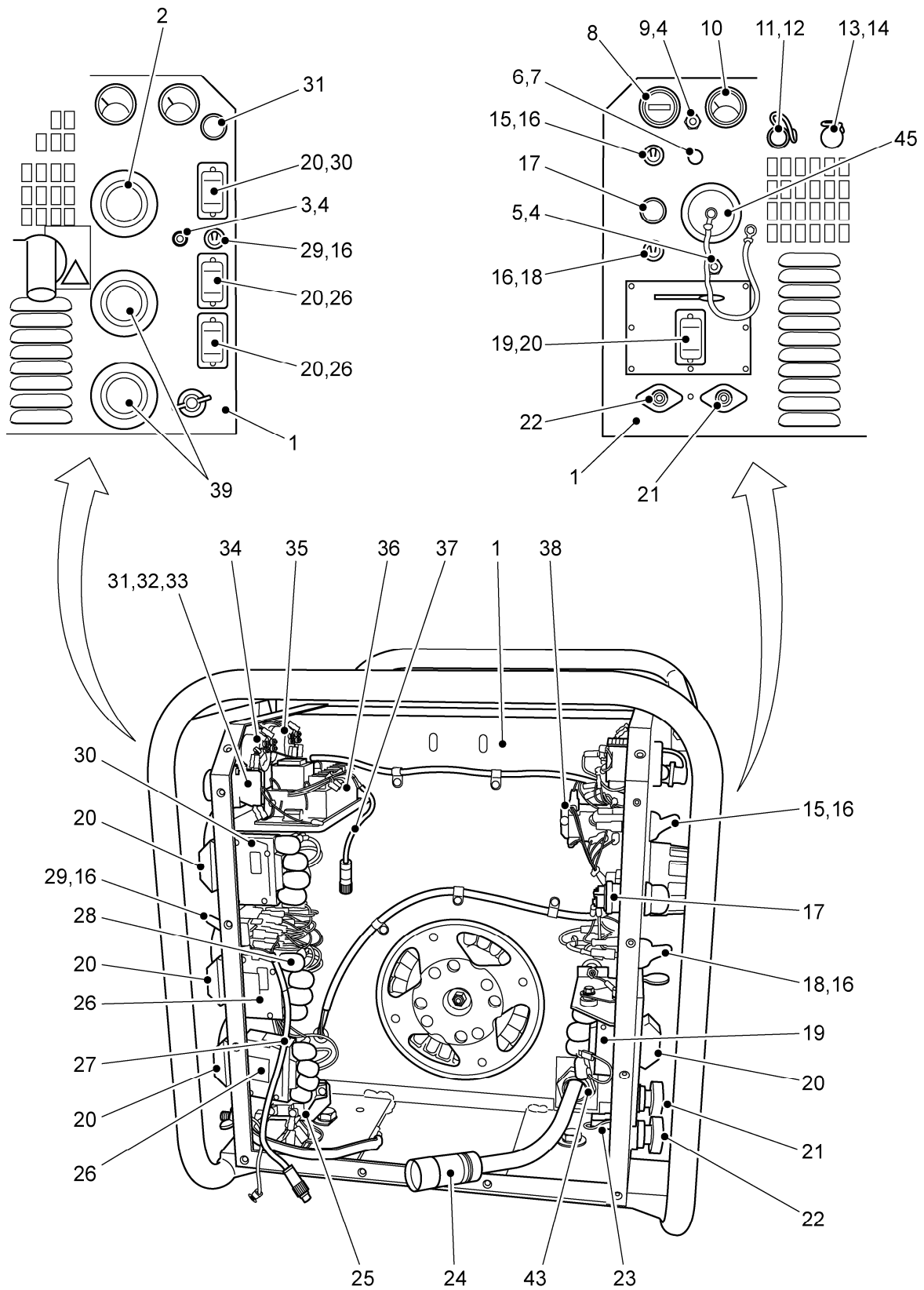


Fig 13 Panels and cables



## PARTS LIST

Fig 13 Item	DMC Army	NATO stock number	Item name	Part No./ Dwg No.	No. Off	Annotation (NSCM)
1	LFG2kW	6110-99-877-8189	PANELS AND CABLES		REF	
2	LFG2kW	5935-12-363-1629	. CONTROL PANEL (CASING)	685-009	1	
3	LFG2kW	5925-99-264-0446	.. SOCKET STRAIGHT 16 A 240 V 2P + E IP67	419306	1	
4	LFG2kW	5930-01-523-7018	.. MCB 2 A 240 VAC 1-POLE	BFBA0012	1	
5	LFG2kW	5925-99-349-6534	.. MCB PROTECTIVE BOOT B FRAME	NC3030H M12-1	3	
6	LFG2kW	6210-14-413-7999	.. MCB 15 A 1-POLE	BFBA0014	1	
7	LFG2kW	6210-14-413-7999	.. LED, 12 MM RED 24 VDC	XVLA334	1	PKT 10
8	LFG2kW	5330-14-497-7501	.. SEAL, LED	XVLZ912	1	
9	LFG2kW	6445-99-854-4157	.. HOURS COUNTER, 24 VDC	085-308	1	
10	LFG2kW	5925-99-862-5192	.. MCB 2 A 32 VDC 1-POLE	BFBA0013	1	
11	LFG2kW	6625-99-880-6963	.. VOLTMETER 0-30 VDC	085-060	1	
12	LFG2kW	4730-12-366-6413	.. COUPLING, HALF QUICK DISCONNECT - BULKHEAD FITTING, MALE 8 MM	170-325	1	
13	LFG2kW	5340-12-365-1557	.. FUEL QUICK COUPLING DUST CAP (MALE)	SK12S	2	
14	LFG2kW	4730-12-366-6412	.. BULKHEAD FITTING, FEMALE 8 MM	21KBTS08MM XS	1	
15	LFG2kW	5340-12-365-1558	.. FUEL QUICK COUPLING DUST CAP (FEMALE)	SK16S	2	
16	LFG2kW	5930-01-067-0970	.. SWITCH, TOGGLE 1-POLE 10 A	2FA53-73/TABS	1	
17	LFG2kW	5930-99-657-8708	.. WEATHER COVER, SWITCH TOGGLE	SX0550	3	
18	LFG2kW	5930-01-520-8661	.. STARTER SWITCH	4546	1	
19	LFG2kW	5930-99-862-2775	.. SWITCH BIASED 10 A MOM	6GA5B-73	1	
20	LFG2kW	5925-99-811-2628	.. MCB, 80 A 1-POLE	DAJM0004	1	
21	LFG2kW	5340-00-007-7578	.. MCB PROTECTIVE BOOT D FRAME	HE-1015	1	
22	LFG2kW	5940-99-868-0204	.. KIT STUD TERMINAL POSITIVE	018401	1	
23	LFG2kW	5940-99-181-0927	.. KIT STUD TERMINAL NEGATIVE	018402	1	
24	LFG2kW	5915-99-724-2779	.. VARISTOR PACK DC	136-510	1	
25	LFG2kW	6150-99-754-0066	... PMG CABLE	014944	1	
26	LFG2kW	5905-12-186-7958	.. VARISTOR AC	Q69-X3310	1	
27	LFG2kW	5925-99-836-4181	.. MCB, 16 A 1-POLE	D2AHXA0031	2	
28	LFG2kW	6150-99-549-6757	.. VOLTAGE SELECT CABLE ASSEMBLY	022-005	1	
29	LFG2kW	5935-99-961-3236	.. CIRCUIT BREAKER TERMINAL COVER	MTC1PA1R	12	
30	LFG2kW	5930-01-525-0871	.. SWITCH, TOGGLE, 4-POLE	IL01-73XHG1	1	
31	LFG2kW	5925-99-131-9245	.. MCB, 11 A 1-POLE	D2AHXA0029	1	
32	LFG2kW	5930-14-541-9360	.. SWITCH PUSHBUTTON	ZB5AA26	1	
33	LFG2kW	5975-14-539-8100	.. SWITCH BODY/COLLAR	ZB5-AZ0009	1	
34	LFG2kW	5930-14-520-8093	.. CONTACT BLOCK	ZBE101	1	
35	LFG2kW	6625-99-212-6663	.. AC VOLTMETER	085-095	1	
36	LFG2kW	6625-99-682-6561	.. LOAD METER	085-104	1	

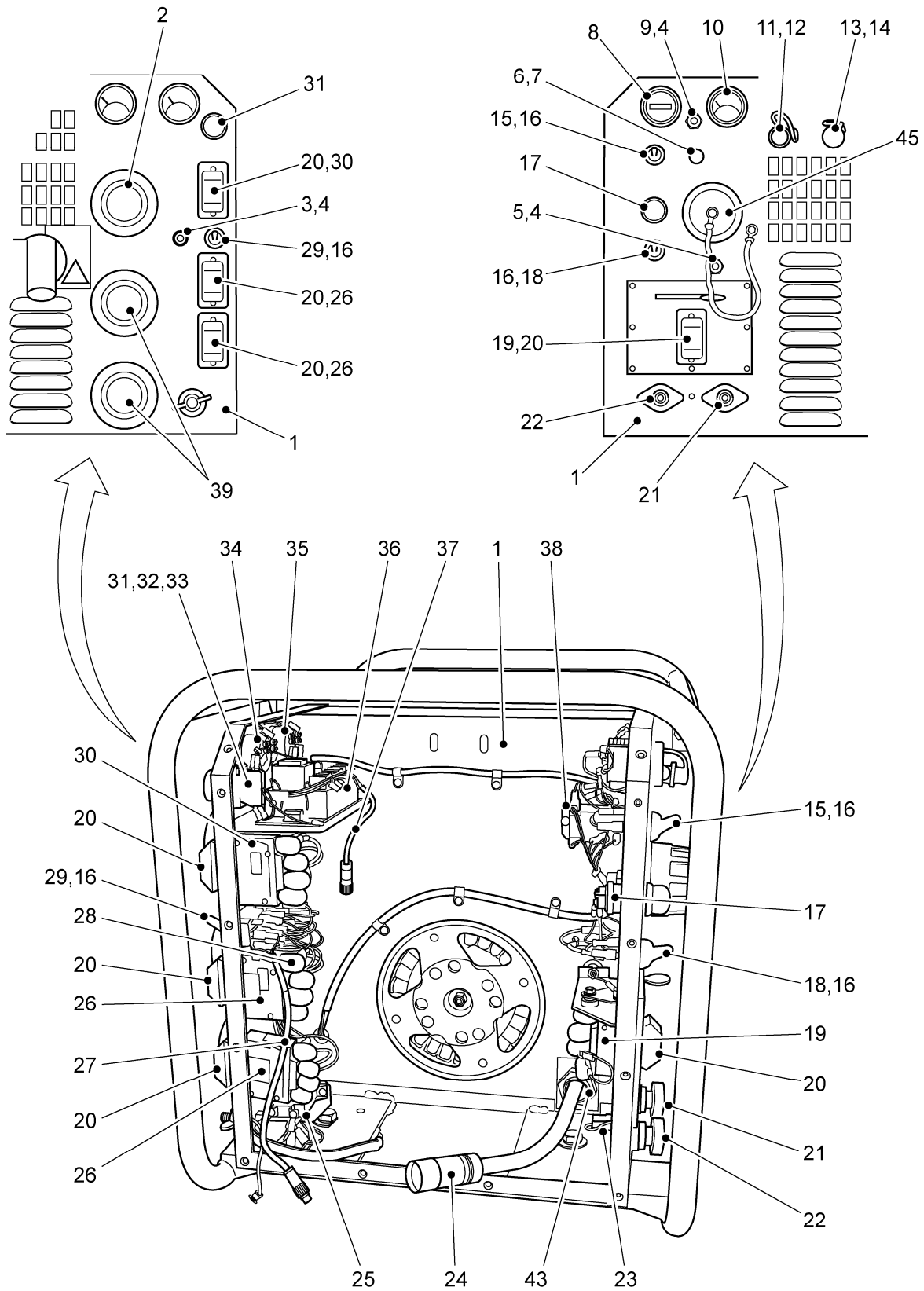


Fig 13 Panels and cables

**PARTS LIST**

Fig 13 Item	DMC Army	NATO stock number	Item name	Part No./ Dwg No.	No. Off	Annotation (NSCM)
			PANELS AND CABLES - Contd			
			CONTROL PANEL (CASING) - Contd			
36	LFG2kW	5925-99-363-2415	.. EARTH LEAKAGE UNIT, 30 A	110-903	1	
37	LFG2kW	6150-99-336-6870	.. CABLE ASSEMBLY CT	022-004	1	
38	LFG2kW	5945-99-732-6717	.. RELAY, 30 A DPNO 24 VDC	T92P7A22-240	1	
39	LFG2kW	5935-12-363-1630	.. SOCKET STRAIGHT, 16 A 110 V 2P + E IP67	419304	2	
NI 40	LFG2kW	5340-99-551-8158	.. HARDWARE KIT, MECHANICAL (FIXING KIT FOR DC TERMINALS ITEM 20 AND 21)	615-692	2	
NI 41	LFG2kW	5975-99-995-0740	.. COVER, PMG CABLE	040-749/58	1	
NI 42	LFG2kW	6150-99-377-5672	.. EMC STRAP (EARTH STRAP ADAPTOR TO BULKHEAD)	136-018	1	
43	LFG2kW	5975-99-990-6988	.. CONNECTOR, SPLIT NYLON AND LOCK NUT	135-514	1	
NI 44	LFG2kW	5905-99-333-0183	.. RESISTOR, FIXED, FILM (R1 100 OHMS)	220-6151	1	Refer to Cat 302, LFG circuit diagram
45	C46MT4	5935-99-802-8442	.. COVER ELECTRICAL (INTER VEHICLE SOCKET)	FV627996	1	

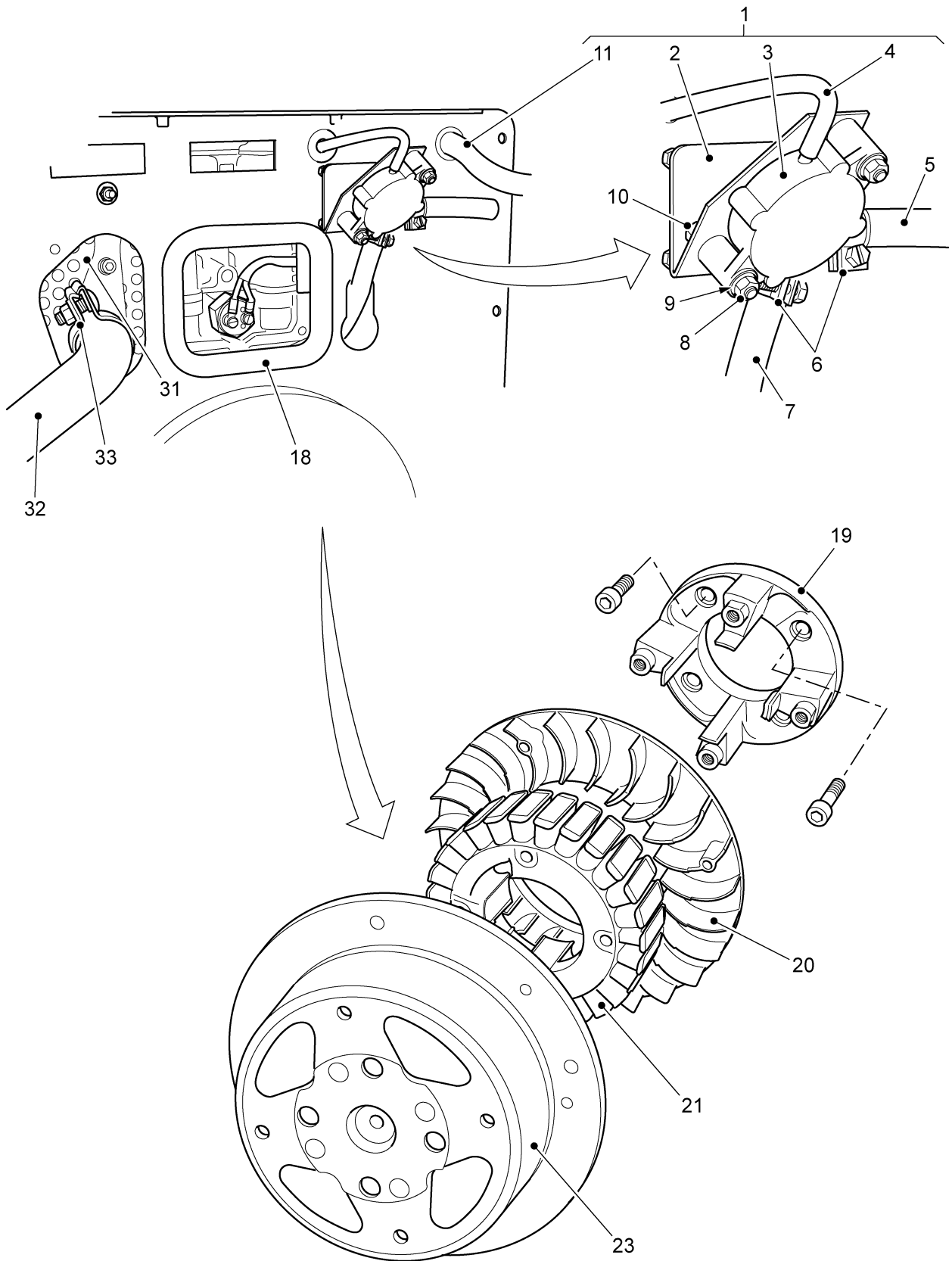


Fig 14 Rotor, stator and circular pulse pump

**PARTS LIST**

Fig 14 Item	DMC Army	NATO stock number	Item name	Part No./ Dwg No.	No. Off	Annotation (NSCM)
			ROTOR, STATOR AND CIRCULAR PULSE PUMP			REF
1	LFG2kW	2910-99-152-1495	. PULSE PUMP ASSY, KIT	665-016	1	
2		NP	.. PULSE PUMP ADAPTOR	040-749/68	1	
3		NP	.. PULSE PUMP	170-966	1	
4	LFG2kW	4720-99-232-3545	.. FUEL HOSE TO TANK	017280	1	
5	LFG2kW	4720-99-262-7603	.. FUEL HOSE TO QUICK COUPLER	017414	1	
6		5340-99-836-4196	.. FUEL HOSE CLIP	170-122	2	
7	LFG2kW	4720-99-876-5782	.. FUEL HOSE FROM PULSE PUMP	017415	1	
8		NP	.. NUT, NYLOC, M6 - BZP	150-197	2	
9		NP	.. WASHER, FLAT, M6 - BZP	150-246	2	
10		NP	.. BOLT, HEX HEAD, M6 x 50 LG - BZP	150-588	2	
11	LFG2kW	4720-99-731-8837-	.. HOSE, TANK RETURN TO QUICK COUPLER	017141	1	
NI 12	LFG2kW	4720-99-668-8536	. FUEL PIPE, TANK TO FUEL FILTER	017404	1	
NI 13	LFG2kW	4720-99-322-3899	. FUEL HOSE, RETURN TO Y CONNECTOR	017401	1	
NI 14	LFG2kW	4720-99-153-6089	. FUEL HOSE, INJ TO Y CONNECTOR	017402	1	
NI 15	LFG2kW	4720-99-562-9393	. FUEL PIPE, TANK TO Y CONNECTOR	017403	1	
NI 16	LFG2kW	4720-99-839-4652	. FUEL HOSE, TANK TO FUEL PUMP	017405	1	
NI 17	LFG2kW	4720-99-839-4654	. FUEL HOSE, FUEL PUMP TO RETURN VALVE	017406		
18	LFG2kW	9390-14-501-5754	. SIDE SEAL (MANUFACTURE FROM)	1011-12	A/R	
19	LFG2kW	3040-99-131-9232	. STATOR ADAPTOR	022-007	1	
20	LFG2kW	6115-99-164-9129	. COOLING FAN	040-749/03	1	
21	LFG2kW	6115-99-158-5533	. STATOR	022-006	1	
NI 22	LFG2kW	5975-99-862-1655	.. PMG CONNECTOR	022-021	2	
23	LFG2kW	6115-99-246-6355	. ROTOR ASSEMBLY	022-010	1	
NI 24	LFG2kW	4720-12-385-1582	. HOSE, NONMETALLIC, FUEL	259-012-00	1	
NI 25	LFG2kW	5970-12-385-3819	. SLEEVE, HEAT RESISTANT	239-016-11	1	
NI 26	LFG2kW	4730-12-385-1083	. CLAMP/FERRULE, FUEL HOSE	505-779-00	1	
NI 27	LFG2kW	5975-99-166-5827	. CABLE TAB	040-749/67	1	
NI 28	LFG2kW	5310-99-850-4155	. WASHER, RETAINING (ROTOR)	040-749/65	1	
NI 29	LFG2kW	TBA	. SKT CAP HD SET SCREW, M10 x 70 MM		1	
NI 30	LFG2kW	5330-12-387-0517	. GASKET, EXHAUST	050 802 00	1	
31	LFG2kW	2990-12-387-0460	. EXHAUST, SILENCER	018 642 01	1	
32	LFG2kW	2990-12-388-2895	. EXHAUST, ELBOW	017052	1	
33	LFG2kW	6115-99-727-2730	. EXHAUST, CLAMP	017053	1	

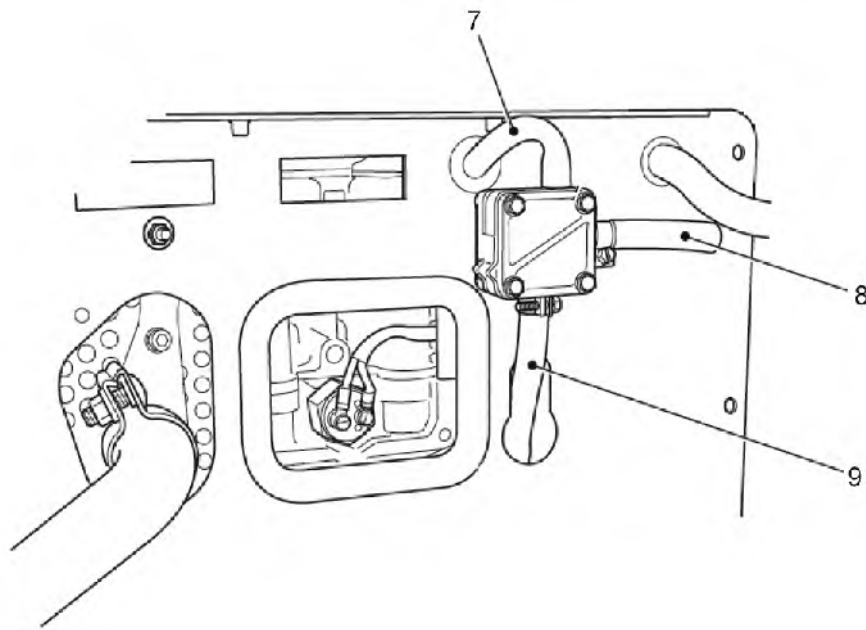


Fig 15 Square pulse pump

**PARTS LIST**

Fig 15 Item	DMC Army	NATO stock number	Item name	Part No./ Dwg No.	No. Off	Annotation (NSCM)
NI 1	LFG2KW	4720-99-668-8536	SQUARE PULSE PUMP		REF	
NI 2	LFG2KW	4720-99-322-3899	. FUEL PIPE, TANK TO FUEL FILTER	017404	1	
NI 3	LFG2KW	4720-99-153-6089	. FUEL HOSE, RETURN TO Y CONNECTOR	017401	1	
NI 4	LFG2KW	4720-99-562-9393	. FUEL HOSE, INJ TO Y CONNECTOR	017402	1	
NI 5	LFG2KW	4720-99-839-4652	. FUEL PIPE, TANK TO Y CONNECTOR	017403	1	
NI 6	LFG2KW	4720-99-839-4654	. FUEL HOSE, TANK TO FUEL PUMP	017405	1	
7	LFG2KW	4720-99-839-4654	. FUEL HOSE, FUEL PUMP TO RETURN VALVE	017406		
8	LFG2KW	4720-99-164-9135	. HOSE, PULSE PUMP TO TANK	175-043	1 EA	
9	LFG2KW	4720-99-153-7121	. . HOSE, QUICK COUPLER TO PULSE PUMP	175-044	1 EA	
	LFG2KW	4720-99-608-9412	. . HOSE, CRANK CASE PRESSURE	175-040	1 EA	

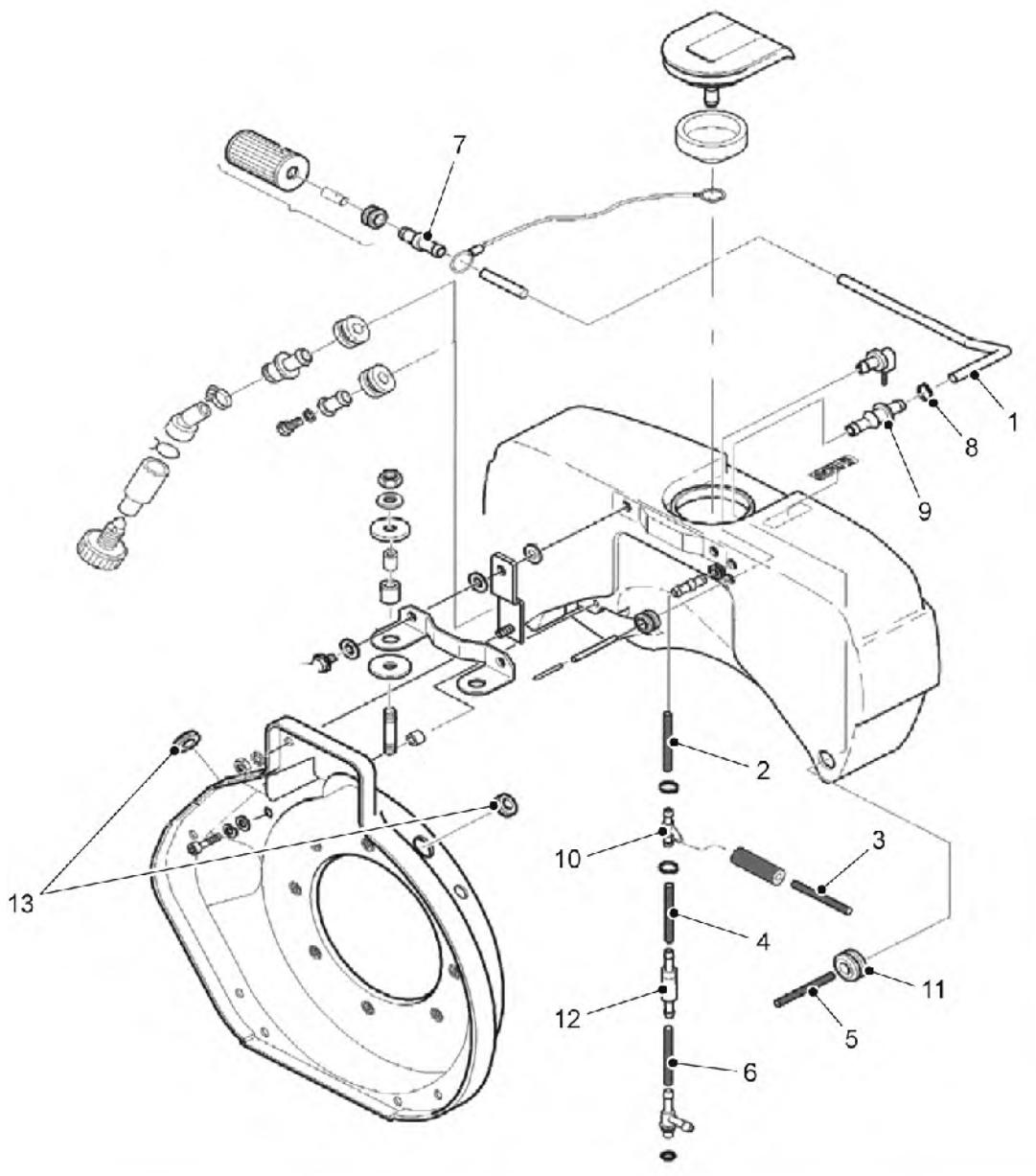


Fig 16 Engine fuel hoses



**PARTS LIST**

Fig 16 Item	DMC Army	NATO stock number	Item name	Part No./ Dwg No.	No. Off	Annotation (NSCM)
			ENGINE FUEL HOSES		REF	
1	LFG2kW	4720-99-668-8536	. FUEL PIPE, TANK TO FUEL FILTER	017404	1	
2	LFG2kW	4720-99-322-3899	. FUEL HOSE, RETURN TO Y CONNECTOR	017401	1	
3	LFG2kW	4720-99-153-6089	. FUEL HOSE, INJ TO Y CONNECTOR	017402	1	
4	LFG2kW	4720-99-562-9393	. FUEL PIPE, TANK TO Y CONNECTOR	017403	1	
5	LFG2kW	4720-99-839-4652	. FUEL HOSE, TANK TO FUEL PUMP	017405	1	
6	LFG2kW	4720-99-839-4654	. FUEL HOSE, FUEL PUMP TO RETURN VALVE	017406		
7	LFG2kW	4730-12-365-8431	. CONNECTOR, TUBING STRAIGHT	017597	1	
8	LFG2kW	4730-12-359-6950	. CLAMP, HOSE	017598	1	
9	LFG2kW	4730-12-365-8432	. CONNECTOR, TUBING STRAIGHT	017599	1	
10	LFG2kW	4730-12-396-3088	. TEE HOSE	017604	1	
11	LFG2kW	5325-12-365-9378	. GROMMET, NON METALLIC	017600	1	
12	LFG2kW	4820-12-370-3860	. VALVE, VENT	017601	1	
13	LFG2kW	5325-12-365-9380	. GROMMET, NON METALLIC	017602	2	

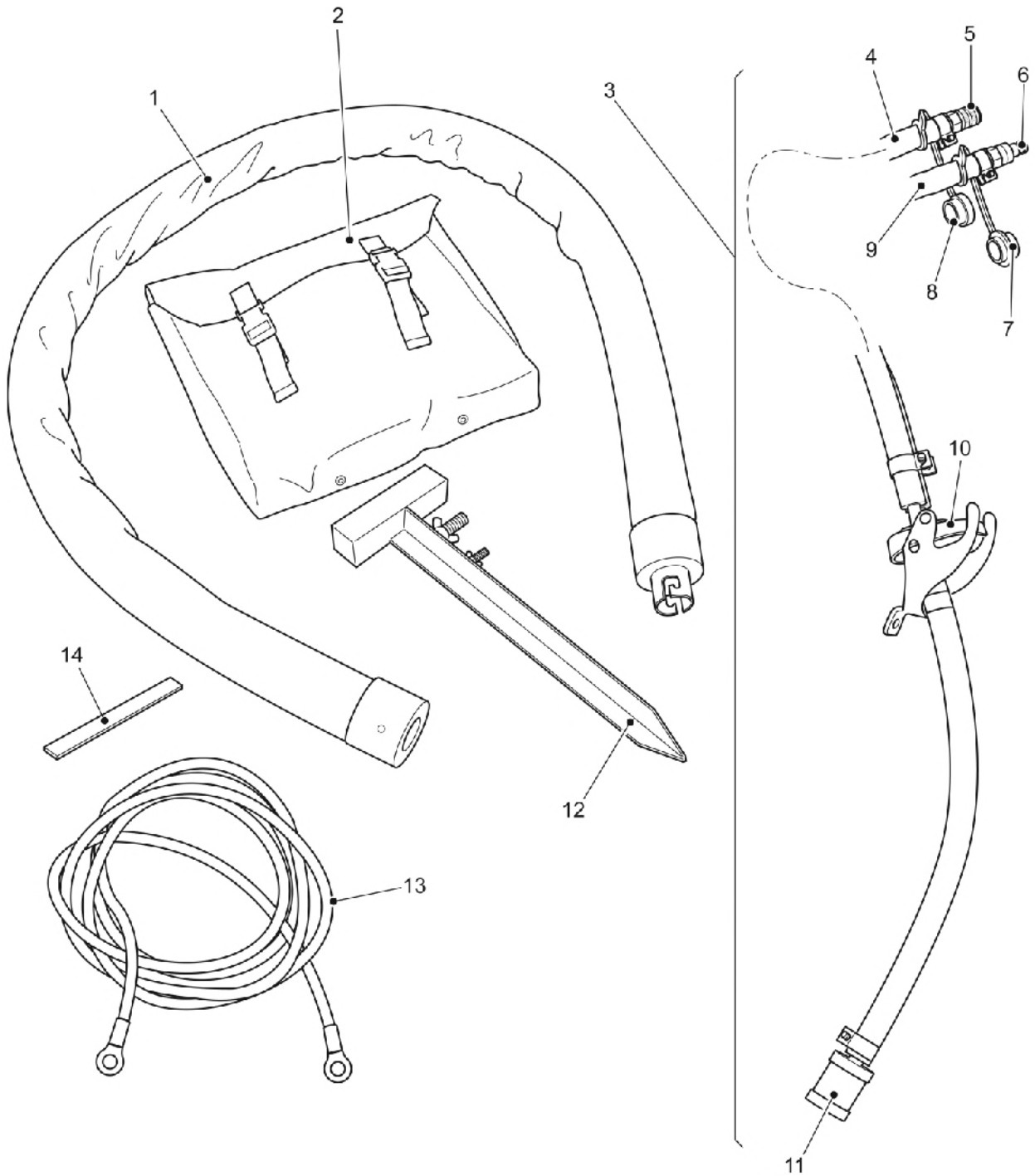


Fig 17 Accessories

**PARTS LIST**

Fig 17 Item	DMC Army	NATO stock number	Item name	Part No./ Dwg No.	No. Off	Annotation (NSCM)
			ACCESSORIES		REF	
1	LFG2kW	4720-99-611-7784	. EXHAUST EXTENSION	180-815	1	
2	LFG2kW	5140-99-939-0976	. ACCESSORIES BAG	061-069	1	
3	LFG2kW	4730-99-151-3452	. MANIFOLD FUELLING, JERRY CAN ADAPTOR	065-552	1	
4	LFG2kW	4720-99-259-0012	.. HOSE, FUEL RETURN	014997	1	
5	LFG2kW	4730-12-366-6410	.. HOSE FITTING, FEMALE 8 MM	21KBTF08MM XS	1	
6	LFG2kW	4730-12-366-6411	.. COUPLING, HALF QUICK DISCONNECT - HOSE FITTING, MALE 8 MM	170-323	1	
7	LFG2kW	5340-12-365-1557	.. DUST CAP, FUEL QUICK COUPLER (MALE)	SK12S	2	
8	LFG2kW	5340-12-365-1558	.. DUST CAP, FUEL QUICK COUPLER (FEMALE)	SK16S	2	
9	LFG2kW	4720-15-178-0471	.. HOSE, FUEL FLOW (MANUFACTURE FROM)	015050	1	
10	LFG2kW	4720-99-693-0530	.. ADAPTOR, JERRY CAN		1	
11	LFG2kW	2940-99-549-7839	.. FILTER FUEL, JERRY CAN	170-315	1	
12	LFG2kW	5975-99-901-0148	. EARTH SPIKE	IE/B59367	1	
13	LFG2kW	6150-99-811-2625	. EARTH LEAD, 2 M	136-012	1	
14	LFG2kW	5210-99-796-7540	. FEELER GAUGE (LOCATED IN AIR FILTER COVER)	501-815	1	
NI 15	LFG2kW	7690-99-481-9849	. DECAL SET, WARNING LABELS	499-903	1	

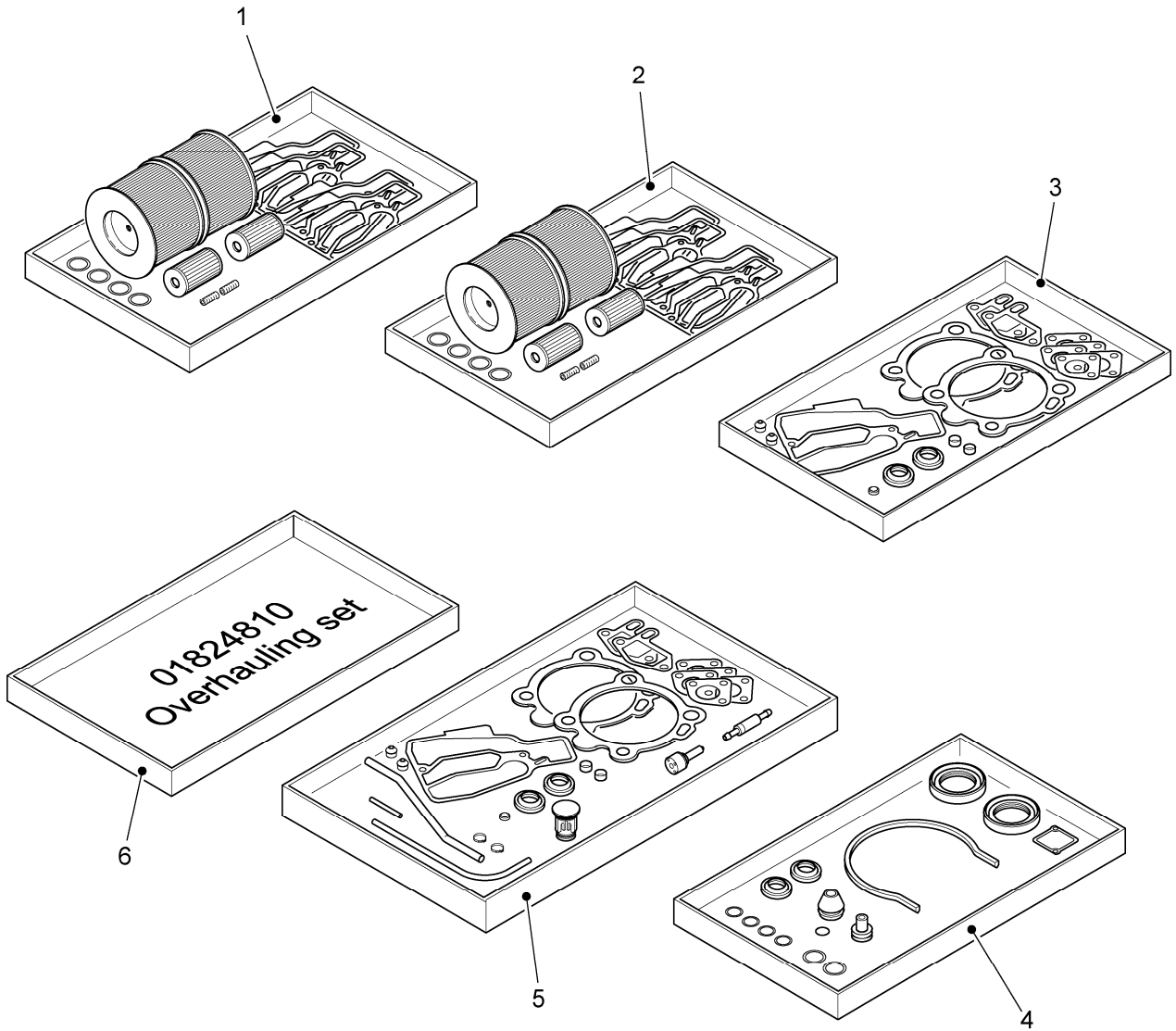


Fig 18 Maintenance kit

**PARTS LIST**

Fig 18 Item	DMC Army	NATO stock number	Item name	Part No./ Dwg No.	No. Off	Annotation (NSCM)
0			MAINTENANCE KITS		REF	
1	LFG2kW	2815-12-383-1507	. 1,000 HR MAINTENANCE KIT	018 191 00	1	
2	LFG2kW	2940-01-527-2810	. SERVICE MAINTENANCE KIT	015 543 11	1	
3	LFG2kW	5330-12-383-1406	. GASKET SET, CYLINDER HEAD	015 541 01	1	
4	LFG2kW	5330-12-383-1569	. GASKET SET, CRANKCASE	015 542 02	1	
5	LFG2kW	2815-12-383-1468	. EMERGENCY KIT	018 192 10	1	
6	LFG2kW	2815-12-383-1469	. OVERHAULING KIT (EPA 2)	018 248 10	1	For Engine #s 30030xxxxxxx
NI 7	LFG2kW	5305-99-252-6216	. M10 GRUB SCREW x 35 MM, C/SHAFT PROTECTION	530	1	Rotor removal Unbrakco
NI 8	G1B	5305-12-132-9425	. M16 SCREW CAP, FINE THD, 140 MM LG/44 MM THD LG	0636 020 262	1	Rotor removal ZF GB Ltd



**PAGE INTENTIONALLY LEFT BLANK**

---

**CHAPTER 3****INDEXES****CONTENTS**

## Para

- 1 Introduction

## Chapter

- 3-1 Index of NATO Stock Numbers to Chapter, Figure and Item Numbers.
- 3-2 Index of Manufacturers' Part/Drawing Numbers to Chapter, Figure and Item Numbers.
- 3-3 Not issued.
- 3-4 Not issued.
- 3-5 Not issued.

**INTRODUCTION**

- 1 This chapter identifies the number of indexes provided in support to the main Parts List.



PAGE INTENTIONALLY LEFT BLANK



---

**CHAPTER 3-1**  
**INDEX OF NATO STOCK NUMBERS**  
**TO**  
**CHAPTER, FIGURE AND ITEM NUMBERS**  
**CONTENTS**

	Page
Index pages.....	3



---

**PAGE INTENTIONALLY LEFT BLANK**

**INDEX OF NATO STOCK NUMBERS**
**TO**
**CHAPTER, FIGURE AND ITEM NUMBERS**

NATO stock number	Chapter 2-sub-chap	Fig & Item	NATO stock number	Chapter 2-sub-chap	Fig & Item
5340-00-007-7578		13-20	5365-12-365-8668		12-7
5930-01-067-0970		13-15	5360-12-365-8671		6-6
2590-01-282-5087		6-38	5340-12-365-8675		11-4
5305-01-406-0008		12-8	5360-12-365-8676		11-3
5930-01-520-8661		13-17	2815-12-365-8861		6-8
5340-01-521-5980		2-11	2815-12-365-8862		6-4
2990-01-523-7100		3-6	2815-12-365-8863		6-14
5930-01-523-7018		13-4	2815-12-365-8864		6-17
1680-01-524-5920		4-18	2815-12-365-8865		6-18
5930-01-525-0871		13-29	3120-12-365-8866		5-5
3110-01-525-1043		11-2	2815-12-365-8868		5-2
5310-01-525-7464		4-11	2815-12-365-8870		8-1(1)
5330-01-525-9672		10-3	2815-12-365-8871		7-2(1)
4320-01-526-2833		4-20	2815-12-365-8872		7-3
2940-01-527-2810		18-2	3110-12-365-8873		10-14
3110-01-527-3743		10-13	2910-12-365-9072		12-10
3120-01-527-3744		7-5	2910-12-365-9076		11-5
2815-01-546-4611		7-1(1)	5325-12-365-9377		4-10
5306-01-549-8680		5-4	5325-12-365-9378		16-11
5305-12-132-9425		18-NI 8	5325-12-365-9380		16-13
5365-12-142-8108		10-10	5310-12-365-9523		12-9
5330-12-156-4535		10-11	5310-12-365-9899		6-9
5310-12-156-4991		4-15	5310-12-365-9900		6-5
5310-12-174-2405		4-17	5310-12-365-9901		6-15
5365-12-174-2626		8-2	5310-12-365-9903		8-3
5930-12-176-2232		10-1	5310-12-365-9904		8-4
5305-12-181-3588		6-11	5310-12-365-9905		8-5
5905-12-186-7958		13-25	5310-12-365-9906		8-6
5310-12-311-8239		12-12	5310-12-365-9907		8-7
5310-12-337-2909		5-1	5307-12-366-0066		6-16
3120-12-337-3889		5-3	5310-12-366-0069		8-2
2940-12-346-9235		10-7	5310-12-366-0198		4-8
5330-12-355-7484		10-5	5310-12-366-0314		6-12
2940-12-355-8118		4-7	5305-12-366-0316		7-4
5330-12-356-4207		6-42	5310-12-366-0649		6-7
4730-12-359-6950		16-8	4310-12-366-0650		6-2(1)
5330-12-362-7292		6-32	4310-12-366-0651		6-3
9390-12-363-1368		3-2	5330-12-366-0954		6-19
5935-12-363-1629		13-2	5330-12-366-0955		6-21
5935-12-363-1630		13-39	5330-12-366-0956		6-23
2910-12-363-2210		12-1(1)	5330-12-366-0957		6-25
2910-12-363-2212		12-2(1)	5330-12-366-0958		6-27
2920-12-363-2214		3-5	5330-12-366-0959		6-29
5331-12-363-4241		10-9	5330-12-366-0960		6-31
5330-12-363-4243		4-12	5330-12-366-0961		6-33
5360-12-363-5186		10-8	5330-12-366-0962		6-34
2910-12-364-1980		4-4	5330-12-366-1913		10-2
2920-12-364-6611		4-6	5342-12-366-2148		10-6
5340-12-365-1557		15-7	2590-12-366-2518		4-3
		17-7	3940-12-366-2519		3-4(1)
5340-12-365-1558		13-14			6-1
		17-8	2815-12-366-5933		3-4(2)
4730-12-365-8431		16-7			4-1(2)
4730-12-365-8432		16-9	4730-12-366-6410		17-5
4730-12-365-8442		12-11	4730-12-366-6411		17-6
5365-12-365-8529		3-9	4730-12-366-6412		13-13
5340-12-365-8531		6-10	4730-12-366-6413		13-11
5365-12-365-8664		12-3	2910-12-369-9444		12-2(2)
5365-12-365-8665		12-4	2910-12-369-9446		12-1(2)
5365-12-365-8666		12-5	2815-12-369-9447		3-4(1)
5365-12-365-8667		12-6			4-1(1)

**INDEX OF NATO STOCK NUMBERS**  
**TO**  
**CHAPTER, FIGURE AND ITEM NUMBERS**

NATO stock number	Chapter 2-sub-chap	Fig & Item	NATO stock number	Chapter 2-sub-chap	Fig & Item
4820-12-370-3860		16-12	4720-99-164-9135		15-7
4730-12-380-7642		4-33	5975-99-166-5827		14-NI 27
2815-12-383-0051		6-36	5940-99-181-0927		13-22
6680-12-383-0185		10-4	6625-99-212-6663		13-34
5330-12-383-1406		18-3	5305-99-213-6935		10-15
2815-12-383-1468		18-5	5340-99-216-0558		3-8
2815-12-383-1469		18-6	6115-99-225-8717		2-6
2815-12-383-1507		18-1	5340-99-226-1119		2-13
5330-12-383-1569		18-4	4720-99-232-3545		14-4
5360-12-383-2069		4-19	6115-99-246-6355		14-23
5330-12-383-2647		6-39	5305-99-252-6216		18-NI 7
4730-12-383-4040		4-14	5975-99-254-5275		3-3
2815-12-383-4124		6-37	4720-99-259-0012		17-4
2815-12-383-4138		6-35	2990-99-260-9337		4-13
3120-12-384-0467		7-6	4720-99-262-7603		14-5
2815-12-384-0473		7-1(2)	5925-99-264-0446		13-3
2815-12-384-0475		7-2(2)	4720-99-322-3899		14-NI 13
2815-12-384-0477		8-1			15-NI 2
2990-12-384-0484		11-1			16-2
2815-12-384-0514		6-2(3)	5905-99-333-0183		13-NI 44
5330-12-384-0595		6-20	6150-99-336-6870		13-37
5330-12-384-0598		6-22	5340-99-346-4393		2-1
5330-12-384-0600		6-24	5925-99-349-6534		13-5
5330-12-384-0636		6-26	5925-99-363-2415		13-36
5330-12-384-0638		6-28	6130-99-375-9457		3-1
5330-12-384-0640		6-30	6150-99-377-5672		13-NI 42
2815-12-384-9815		6-2(2)	5330-99-380-7136		5-6
4730-12-385-1083		14-NI 26	5340-99-476-6407		2-15
4720-12-385-1582		14-NI 24	7690-99-481-9849		17-NI 15
2815-12-385-2178		6-13	5999-99-519-4302		2-17
5970-12-385-3819		14-NI 25	6150-99-549-6757		13-27
2910-12-386-9673		8-1(2)	2940-99-549-7839		17-11
2940-12-387-0459		4-5	5340-99-549-8878		2-10
2990-12-387-0460		14-31	5340-99-551-8158		13-NI 40
5330-12-387-0517		14-NI 30	4720-99-562-9393		14-NI 15
2990-12-388-2895		14-32			15-NI 4
5340-12-389-3251		3-NI 10			16-4
4730-12-396-3088		16-10	5340-99-571-7178		2-8
6210-14-413-7999		13-6	4720-99-608-9412		15-9
5330-14-497-7501		13-7	4720-99-611-7784		17-1
9390-14-501-5754		2-5	5360-99-613-6131		4-21
		14-18	5930-99-657-8708		13-16
5930-14-520-8093		13-33	4720-99-668-8536		14-NI 12
5975-14-539-8100		13-32			15-NI 1
5930-14-541-9360		13-31			16-1
5340-14-543-5711		4-9	6625-99-682-6561		13-35
4720-15-178-0471		17-9	4720-99-693-0530		17-10
5340-99-131-9231		2-7	6150-99-702-8025		2-20
3040-99-131-9232		14-19	5915-99-724-2779		13-23
5925-99-131-9245		13-30	5340-99-724-3007		2-3
4730-99-151-3452		17-3	4720-99-727-1554		3-7
5340-99-151-8402		4-22	6115-99-727-2730		14-33
6115-99-151-8414		2-9	4720-99-731-8837		14-11
2910-99-152-1495		14-1	5945-99-732-6717		13-38
4720-99-153-6089		14-NI 14	5999-99-748-2206		2-4
		15-NI 3	6150-99-754-0066		13-24
		16-3	5340-99-794-9587		2-16
4720-99-153-7121		15-8	5210-99-796-7540		17-14
4730-99-154-2856		10-12	5935-99-802-8442		13-45
6115-99-158-5533		14-21	6150-99-811-2625		17-13
6115-99-164-9129		14-20	5925-99-811-2628		13-19

**INDEX OF NATO STOCK NUMBERS**

**TO**

**CHAPTER, FIGURE AND ITEM NUMBERS**

NATO stock number	Chapter 2-sub-chap	Fig & Item	NATO stock number	Chapter 2-sub-chap	Fig & Item
5925-99-836-4181		13-26			
5340-99-836-4196		14-6			
5340-99-837-0498		2-2			
4720-99-839-4652		14-NI 16			
		15-NI 5			
		16-5			
4720-99-839-4654		14-NI 17			
		15-NI 6			
		16-6			
5310-99-850-4155		14-NI 28			
2510-99-851-0661		2-19			
6445-99-854-4157		13-8			
5975-99-862-1655		14-NI 22			
5930-99-862-2775		13-18			
5925-99-862-5192		13-9			
5940-99-868-0204		13-21			
2910-99-870-2841		4-2			
4720-99-876-5782		14-7			
6110-99-877-8189		13-1			
6625-99-880-6963		13-10			
5975-99-901-0148		17-12			
6115-99-908-6784		1-1			
5325-99-910-8246		8-3			
5140-99-939-0976		17-2			



---

**PAGE INTENTIONALLY LEFT BLANK**



---

**CHAPTER 3-2**  
**INDEX OF MANUFACTURERS' PART/DRAWING NUMBERS**  
**TO**  
**CHAPTER, FIGURE AND ITEM NUMBERS**  
**CONTENTS**

	Page
Index pages.....	3



**PAGE INTENTIONALLY LEFT BLANK**



**INDEX OF MANUFACTURERS' PART/DRAWING NUMBERS**
**TO**
**CHAPTER, FIGURE AND ITEM NUMBERS**

Manufacturers' Part or Dwg numbers	Chapter 2- sub-chap	Fig & Item	Manufacturers' Part or Dwg numbers	Chapter 2- sub-chap	Fig & Item
BFBA0012		13-3	017401		14-NI 13
BFBA0013		13-9			15-NI 2
BFBA0014		13-5			16-2
D2AHXA0029		13-30	017402		14-NI 14
DAJM0004		13-19			15-NI 3
D2AHXA0031		13-26	017402		16-3
FM209/9/9/45		2-10	017403		14-NI 15
FM8027-45C		2-8			15-NI 4
FV627996		13-45			16-4
HE-1015		13-20	017404		14-NI 12
IE/B59367		17-12			15-NI 1
IL01-73XHG1		13-29			16-1
K4/2338-63		2-7	017405		14-NI 16
MTC1PA1R		13-28			15-NI 5
NC3030H M12-1		13-4			16-5
Q69-X3310		13-25	017406		14-NI 17
RFI-CWRAP-18X2-15		2-17			15-NI 6
SK12S		13-12			16-6
		17-7	017414		14-5
SK16S		13-14	017415		14-7
		17-8			
SX0550		13-16	017533		4-2
T92P7A22-240		13-38	017 568 00		12-11
XVLA334		13-6	017597		16-7
XVLZ912		13-7	017598		16-8
ZB5AA26		13-31	017599		16-9
ZB5-AZ0009		13-32	017600		16-11
ZBE101		13-33	017601		16-12
013 160 00		10-4	017602		16-13
013 222 11		12-2(1)	017603		4-33
013 222 20		12-2(2)	017604		16-10
013 481 10		7-2(1)	017607		2-20
013 481 20		7-2(2)	017 854 00		4-4
013 938 00		12-1(2)	017 961 03		4-1(1)
014938		3-6	017 961 04		4-1(2)
014944		13-24	017 961 03 1B20-S- 204C		3-4(1)
014996		4-5	017 96 104 1B20-S- 204D		3-4(2)
014997		17-4			
015 001 00		7-3	018 191 00		18-1
015 002 40		6-2(1)	018 192 10		18-5
015 002 42		6-2(3)	018 248 10		18-6
015 035 22		8-1(1)	018 321 00		11-1
015 035 23		8-1(2)	018401		13-21
015050		17-9	018402		13-22
015 353 02		4-3	018418		12-12
015 427 02		10-7	018 576 02		6-2(2)
015 541 01		18-3	018 609 00		8-1
015 542 02		18-4	018 642 01		14-31
015 543 11		18-2	019 365 00		6-38
015 545 10		7-1(2)	022-002		3-1
015 545 20		7-1(1)	022-004		13-37
015 757 00		7-5	022-005		13-27
015 819 00		7-6	022-006		14-21
016 498 10		12-1(1)	022-007		14-19
016 991 01		4-9	022-010		14-23
017 343 00		4-7	022-021		14-NI 22
017 353 00		4-6	037 941 00		5-1
017052		14-32	037 942 01		5-3
017053		14-33	040 075 00		6-34
017141		14-11	040-749/01		2-6
017280		14-4			



**INDEX OF MANUFACTURERS' PART/DRAWING NUMBERS**

**TO**

**CHAPTER, FIGURE AND ITEM NUMBERS**

<b>Manufacturers' Part or Dwg numbers</b>	<b>Chapter 2- sub-chap</b>	<b>Fig &amp; Item</b>	<b>Manufacturers' Part or Dwg numbers</b>	<b>Chapter 2- sub-chap</b>	<b>Fig &amp; Item</b>
040-749/03		14-20	050 600 00		6-31
040-749/13B		2-3	050 601 00		6-33
040-749/15		2-4	050 612 01		6-15
040-749/16X		2-18	050 625 00		6-16
040-749/23X		2-19	050 794 01		11-5
040-749/28		2-2	050 802 00		14-NI 30
040-749/30		2-15	050 893 00		12-9
040-749/31		2-14	050 911 01		6-10
040-749/32		4-22	050 971 00		11-4
040-749/36		2-13	050 973 00		11-3
040-749/40		10-12	051 177 00		4-18
040-749/46		2-16	051 194 00		6-3
040-749/58		13-NI 41	051 374 30		6-40
040-749/65		14-NI 28	051 374 31		6-36
040-749/67		14-NI 27	051 412 00		4-14
040-749/68		14-2	051 482 00		10-8
040-749/129		2-12	052 161 00		4-12
040 936 00		6-6	052 407 00		6-9
040 937 00		6-5	052 784 00		6-41
040 938 00		6-7	052 784 01		6-39
040 944 00		10-14	053 211 00		6-37
040 963 00		12-3	060-806		4-13
040 964 00		12-4	061-069		17-2
040 965 00		12-5	0636 020 262		18-NI 8
040 966 00		12-6	065-552		17-3
040 967 00		12-7	070-496		2-9
040 980 00		10-2	085-060		13-10
040 993 02		10-6	085-095		13-34
041 121 00		8-3	085-104		13-35
041 122 00		8-4	085-308		13-8
041 123 00		8-5	1010-10		3-2
041 176 10		6-1	1011-12		2-5
041 217 00		8-2			14-18
041 250 00		10-5	110-903		13-36
041 251 00		8-6	135 313		3-3
041 252 00		8-7	135-514		13-43
04139000		3-9	136-012		17-13
042 520 00		6-20	136-018		13-NI42
042 521 00		6-22	136-510		13-23
042 522 00		6-24	14099100.1003		3-NI 10
042 523 00		6-26	150-197		14-8
042 524 00		6-28	150-246		14-9
042 525 00		6-30	150-588		14-10
042 526 00		6-32	151-206		3-8
050 469 00		7-4	151-225		4-21
050 473 21		6-35	170-122		14-6
050 509 02		6-13	170-315		17-11
050 531 00		5-5	170-323		17-6
050 532 00		6-17	170-325		13-11
050 533 00		6-18	170-482		3-7
050 534 00		5-2	170-966		14-3
050 540 00		6-14	175-040		15-9
050 547 00		6-12	175-043		15-7
050 557 00		6-40	175-044		15-8
050 567 00		12-10	180-815		17-1
050 594 00		6-19	21KBTF08MMXS		17-5
050 595 00		6-21	21KBTS08MM XS		13-13
050 596 00		6-23	220-6151		13-NI 44
050 597 00		6-25	239-016-11		14-NI 25
050 598 00		6-27	2520MF13-45(M8)		2-1
050 599 00		6-29	259-012-00		14-NI 24

**INDEX OF MANUFACTURERS' PART/DRAWING NUMBERS**

**TO**

**CHAPTER, FIGURE AND ITEM NUMBERS**

Manufacturers' Part or Dwg numbers	Chapter 2- sub-chap	Fig & Item	Manufacturers' Part or Dwg numbers	Chapter 2- sub-chap	Fig & Item
2FA53-73/TABS		13-15			
400 325 00		8-2			
400 337 01		5-6			
419304		13-39			
419306		13-2			
4546		13-17			
499-903		17-NI 15			
500 250 00		4-24			
500 943 00		4-23			
501 206 00		8-3			
501 444 00		4-15			
501 555 00		10-1			
501-815		17-14			
502 163 00		4-17			
503 239 00		12-8			
503 731 00		10-10			
504 232 00		10-3			
504 233 00		10-13			
504 257 00		6-8			
504 258 00		6-4			
504 358 00		4-10			
504 479 00		11-2			
504 522 00		4-11			
504 543 00		4-8			
504 579 00		5-4			
504 698 00		10-11			
504 759 01		10-9			
504 830 00		4-25			
504 831 00		4-20			
504 846 00		4-19			
505 119 00		4-16			
505 131 00		6-11			
505 643 00		10-15			
505-779-00		14-NI 26			
5083300		3-5			
530		18-NI 7			
6GA5B-73		13-18			
615-692		13-NI40			
665-016		14-1			
685-009		13-1			
91-512-25		2-11			



**PAGE INTENTIONALLY LEFT BLANK**

**ARMY EQUIPMENT AND SUPPORT PUBLICATION (AESP) AND ELECTRICAL AND MECHANICAL ENGINEERING REGULATIONS (EMER) - FORM 10**

<b>*AESP/EMER NUMBER:</b>		<b>*IS THIS SAFETY RELATED?</b>	Yes	<input type="checkbox"/>	No	<input type="checkbox"/>
---------------------------	--	---------------------------------	-----	--------------------------	----	--------------------------

<b>Send Form 10 via the Email or Post address. However email is preferred.</b>		Tel	
<b>Email:</b>		<b>Post to</b>	<b>Form 10 Cell FRACAS BFPO 794</b>
(To email this form send as a copy to the email address above)			

ORIGINATORS DETAILS			
<b>*Address</b>		<b>*Name</b>	
		<b>Rank / Grade</b>	
		<b>*Phone</b>	
		<b>*Senders Reference</b>	
		<b>*Date Raised</b>	
<b>* E-Mail</b>		<b>Eqpt Asset Code (if applicable)</b>	

AESP/EMER DETAILS							
<b>*Full Title of AESP/EMER (Not the AESP/EMER Number)</b>							
<b>*Edition</b>	<b>*Amendment</b>	<b>*Chapter</b>	<b>*Page</b>	<b>*Paragraph</b>	<b>Figure</b>	<b>Instruction</b>	<b>Other</b>
<b>*Comments: If additional information is to be supplied, please e-mail with the Form 10 as separate attachments.</b>							

FORM 10 CELL USE			
<b>*Date Received</b>		<b>*Form 10 Reference</b>	
<b>*Date Sent to PT / SME</b>		<b>Problem Report</b>	

PROJECT TEAM / SME RESPONSE TO COMMENTS:			
<b>Project Team (PT) / SME</b>		<b>*Sponsors Name</b>	
<b>*Phone</b>		<b>Rank / Grade</b>	
<b>*Email</b>		<b>*Date Received</b>	
<b>*The following action is to be carried out:</b>	<b>Mark:</b>		<b>Mark:</b>
Issue a revised/amended AESP/EMER:		Under investigation:	
Incorporate comment(s) in future amendments:		No action required:	
<b>Remarks:</b>			
<b>SPONSOR/PT FINAL CLOSURE STEPS</b>	<b>Mark:</b>	<b>Form 10 Cell notified of Date action taken</b>	<b>Date:</b>
Form 10 Originator notified of the action taken:			

**ARMY EQUIPMENT AND SUPPORT PUBLICATION (AESP) AND ELECTRICAL AND  
MECHANICAL ENGINEERING REGULATIONS (EMER) - FORM 10**

Form 10 Guidance

Form 10 can be found within the AESP or, as a template, from the JAMES Portal (Hot Topic – Forms) & TDOL (FORM10).

**Originator responsibility** is to enter the following details marked \*:

- In the **AESP/EMER Number**: cell enter the full document number e.g. AESP 1256-I-400-711.
- Is this **Safety Related?** – select Yes or No as appropriate.
- Originator Details:
  - Full address Inc Post Code or BFPO NO.
  - Originator email address
  - Senders Reference – that must be unique.
- AESP Details shall enter the following details:
  - The Full Title of AESP/EMER should not include the AESP/EMER Number
  - Enter details in all other mandatory fields marked \*.
  - Additional information relating to the Comments (AESP copies, additional text details or photographs) should be attached to the Email at the same time.
- Originator makes up the Form 10 & Sends to Form 10 cell via
  - Post to **Form 10 Cell, FRACAS, BFPO 794** address.
  - Email to [REDACTED]
  - **Any AESP that holds a Security marking higher than 'Restricted' should be securely circulated.**

**FORM 10 CELL responsibilities:**

The Form 10 Cell enters:

- Date Received
- Form 10 Reference
- Date sent to Sponsor
- Register all Form 10 details in the MOSS Form 10 Tracker.

**Sponsor Responsibility**

The Sponsor will:

- Enter their name, email address & phone contact details.
- Enter Date Received
- Enter Details in the non-mandatory field as & when required.
- Acknowledge receipt of Form 10, within 5 working days, by email to Form 10 Cell.
- Assess the contents of comments and details received.
- Mark the relevant Action box and fill out the Remarks field.
- Enter date when the Form 10 is returned to Form 10 Cell.
- Email copy of completed Form 10, within 6 weeks, to the Form 10 Cell and Originator.

**Form 10 Cell on receipt will:**

- Record final stage of the Form 10 into the MOSS Form 10 Tracker.
- Close off the Form 10 and archive.